



ENAPART



93 S Railroad Avenue Unit C
Bergenfield NJ 07621 USA
www.enapart.com
sales@enapart.com



Via del Canneto 35,
Borgosatollo, Brescia - Italia
www.enapart.it
vendite@enapart.it



Barbaros Mah. Ihlamur Bul. Aĝaoĝlu
My Newwork No:3/15 Ataşehir / İstanbul
www.enapart.net
satis@enapart.net



PRIVADA 10 B SUR #3908 COL.
ANZUREZ, C.P. 72530, PUEBLA, PUE
www.enapart.com.mx
sales@enapart.com.mx



Friedrich-Ebert-Anlage 36, 60325
Frankfurt am Main, Germany
www.enapart.de
anfrage@enapart.de



4 boulevard Carnot, 95400
villiers-le-bel, Paris, France
www.enapart.fr
sales@enapart.fr



65049, ОДЕСА, ВУЛИЦЯ ІВАНА
ФРАНКА, БУДИНОК 55, ПОВЕРХ 3
www.enapart.com.ua
sales@enapart.com.ua



MUNICIPIUL BUCUREȘTI, SECTOR 3,
B-DUL BASARABIA, NR.250, CORP P+5
www.enapart.ro
sales@enapart.ro



〒584-0023 大阪府富田林市若松町
東2丁目2番16号
www.enapart.co.jp
sales@enapart.co.jp



PLAZA NUESTRA SEÑORA DE LAS
NIEVES 12 ,LOCAL ,50012,ZARAGOZA
www.enapart.es
ventas@enapart.es

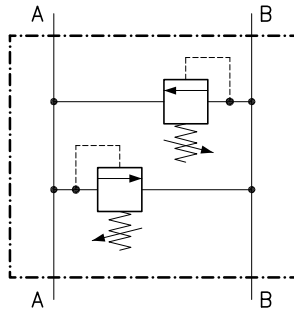


Складова база „Онгъл“, Склад А2, п.к.
4006, гр. Пловдив, България
www.enapart.bg
sales@enapart.bg



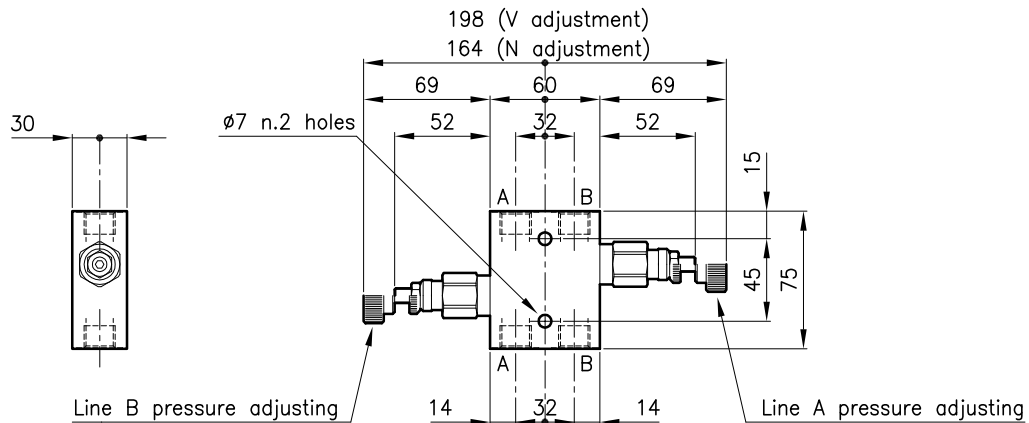
3 Austin Mews, High Street, Hemel
Hempstead, HP1 3AF , United Kingdom
www.enapart.co.uk
sales@enapart.co.uk

Technical features



| Valves | (For features see catalogue 02.040) | LPE 20 |
|---------------------------------------------------------|-------------------------------------|-----------|
| Max. flow | (l/min.) | 30 |
| Max. pressure | (bar) | 210 |
| Fluid viscosity range | (cSt) | 2.8 - 380 |
| Fluid temperature range | (°C) | -20 +80 |
| Mass | (kg) | 0.750 |
| Cracking pressure 90% of setting value | | |
| Reseat pressure 80% of setting value | | |
| Cracking pressure defined with 1 l/min. | | |
| Standard setting obtained with 5 l/min. | | |
| Hydraulic fluid; mineral oil HM and HV ISO 6074 | | |
| Recommended filtration; 19/15 ISO 4466 (25 μ absolutes) | | |
| Standard seals in Polyurethane and Buna N | | |

Dimensions



Ordering informations

LPE 20/D-N-CSL 03-B05

Valves type

Standard springs

Type Setting range

U = 10 - 90 bar

D = 35 - 140 bar

T = 70 - 210 bar

Adjustment type

N = Standard adjustment

V = Handknob adjustment

Version

Standard ports

B05 = G 1/4 ISO 228

B06 = G 3/8 ISO 228

Codes:

LPE 20/U-N-CSL 03-B05 21 011 228

LPE 20/D-N-CSL 03-B05 21 011 229

LPE 20/T-N-CSL 03-B05 21 011 230

LPE 20/U-V-CSL 03-B05 21 011 231

LPE 20/D-V-CSL 03-B05 21 011 232

LPE 20/T-V-CSL 03-B05 21 011 233

LPE 20/U-N-CSL 03-B06 21 011 234

LPE 20/D-N-CSL 03-B06 21 011 235

LPE 20/T-N-CSL 03-B06 21 011 236

LPE 20/U-V-CSL 03-B06 21 011 237

LPE 20/D-V-CSL 03-B06 21 011 238

LPE 20/T-V-CSL 03-B06 21 011 239

Only body codes:

Body type 20-CSL 03-B05 28 144 107

Body type 20-CSL 03-B06 28 144 108