

proval

Process valves &
Automation Systems

TYPE A100
PRO SERIES CE

www.proval.net
info@proval.net

IP67

MODEL: PRO 0240

MOTOR: 40W-80F

WIR.NO: 0160-80000-F

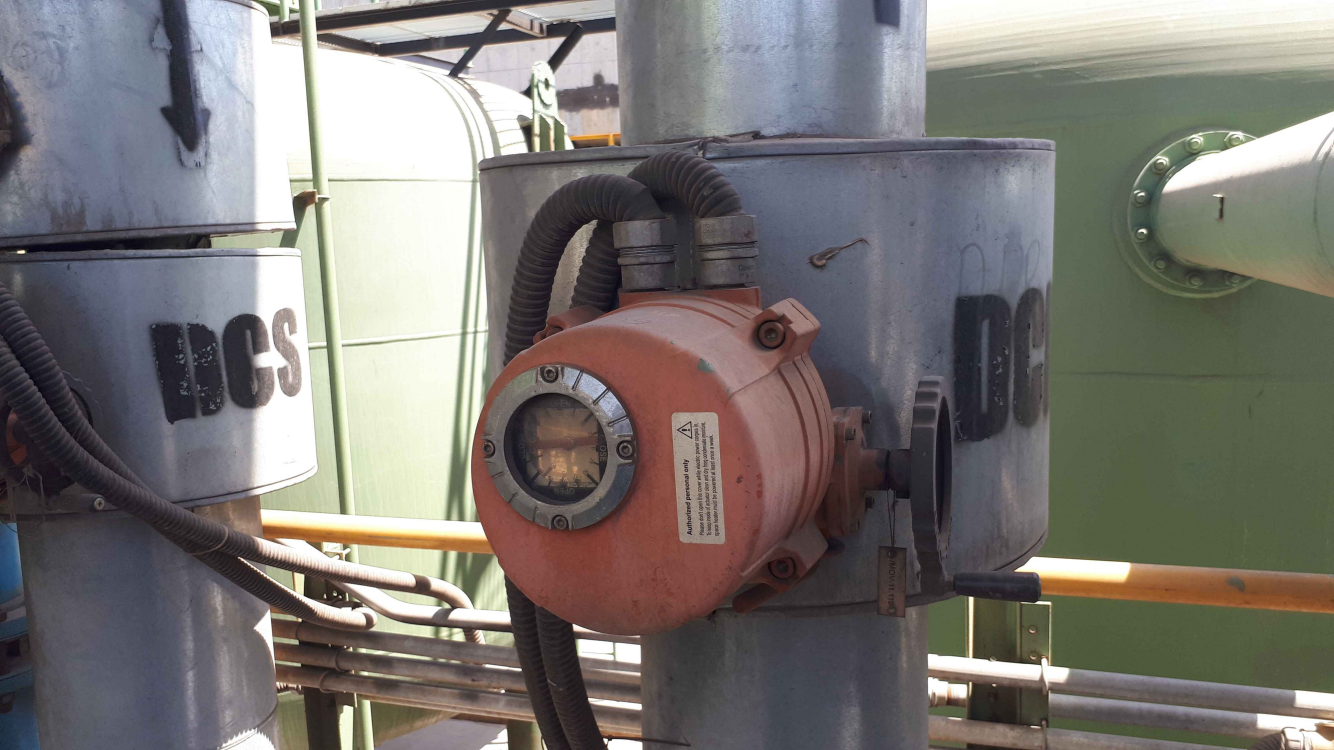
SER.NO: 140034-1172

POWER: 380V-3PH

CURRENT: 0.32A/0.65A

OPER: 26-SEC-90

OPT:



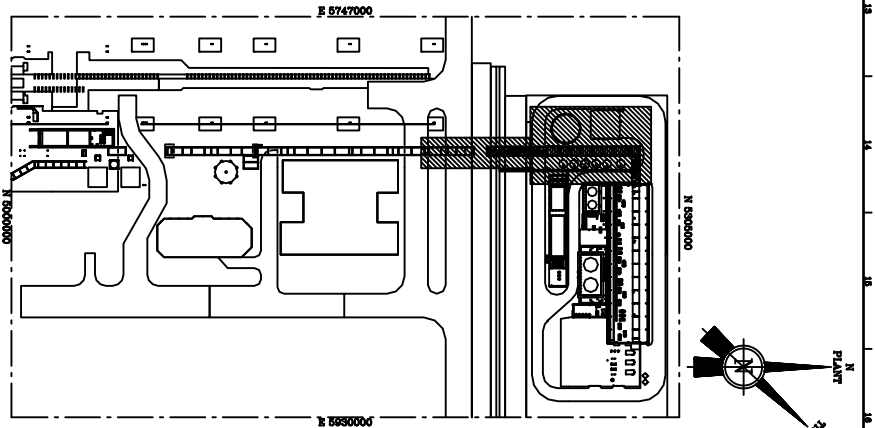
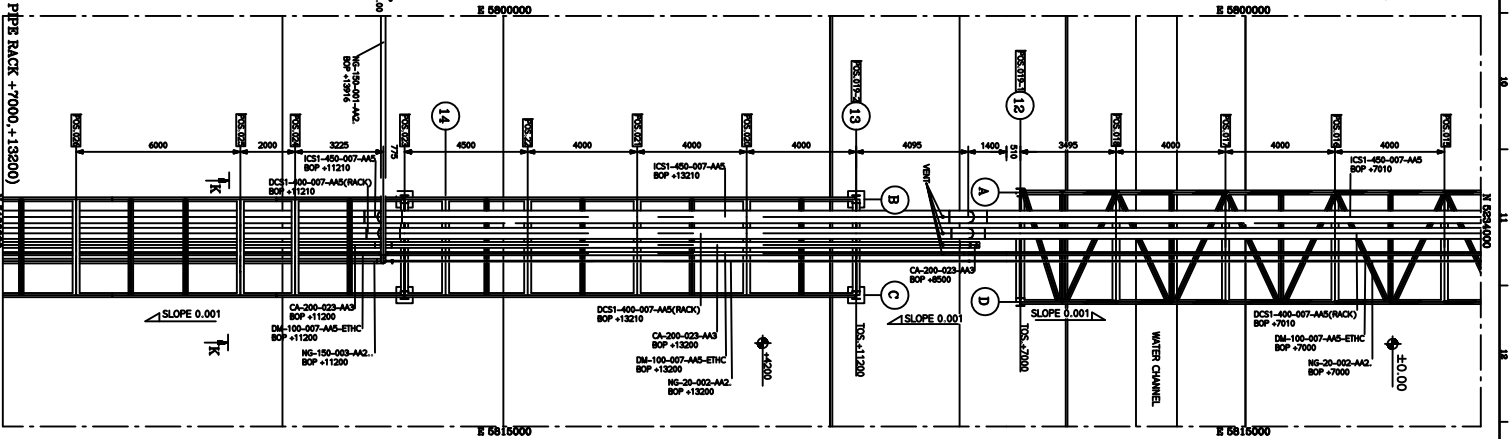
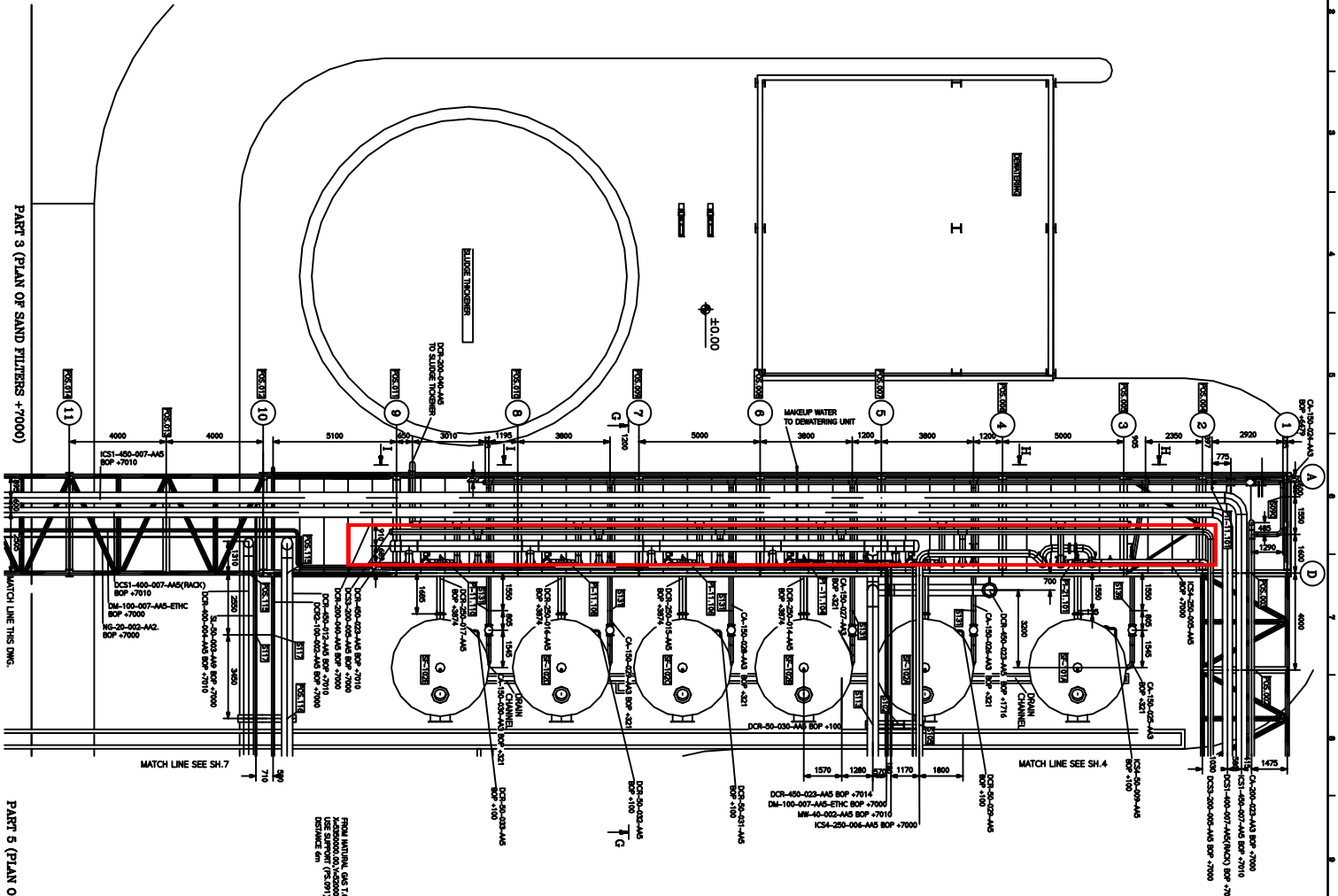
DCS

DCS

⚠
Authorized personnel only
Please read and comply with cover safety instructions.
In the presence of carbon monoxide (CO) or hydrogen sulfide (H₂S),
ignition hazard will be present at all times. Do not smoke.

DO NOT TOUCH

REVISIONS		
REV	DATE	DESCRIPTION AND SIGNATURE
A	83/03/16	FOR APPROVAL
B	83/05/25	FOR CONSTRUCTION



NOTE:
FOR ALL PIPE IS CONSIDERED SUITABLE SLOPE TOWARD DRAIN LINE
START POINT OF PIPE ROUTE IF REQUIRED. DRAIN IN LOWEST
FOR SUPPORT PIPES. SLOPE 0.001 SHOULD BE USED.

REFERENCE DRAWING	
DRAWING LIST	DESCRIPTION
7.01	7.01
7.02	7.02
7.03	7.03
7.04	7.04
7.05	7.05
7.06	7.06
7.07	7.07
7.08	7.08
7.09	7.09
7.10	7.10
7.11	7.11
7.12	7.12
7.13	7.13
7.14	7.14
7.15	7.15
7.16	7.16
7.17	7.17
7.18	7.18
7.19	7.19
7.20	7.20
7.21	7.21
7.22	7.22
7.23	7.23
7.24	7.24
7.25	7.25
7.26	7.26
7.27	7.27
7.28	7.28
7.29	7.29
7.30	7.30
7.31	7.31
7.32	7.32
7.33	7.33
7.34	7.34
7.35	7.35
7.36	7.36
7.37	7.37
7.38	7.38
7.39	7.39
7.40	7.40
7.41	7.41
7.42	7.42
7.43	7.43
7.44	7.44
7.45	7.45
7.46	7.46
7.47	7.47
7.48	7.48
7.49	7.49
7.50	7.50
7.51	7.51
7.52	7.52
7.53	7.53
7.54	7.54
7.55	7.55
7.56	7.56
7.57	7.57
7.58	7.58
7.59	7.59
7.60	7.60
7.61	7.61
7.62	7.62
7.63	7.63
7.64	7.64
7.65	7.65
7.66	7.66
7.67	7.67
7.68	7.68
7.69	7.69
7.70	7.70
7.71	7.71
7.72	7.72
7.73	7.73
7.74	7.74
7.75	7.75
7.76	7.76
7.77	7.77
7.78	7.78
7.79	7.79
7.80	7.80
7.81	7.81
7.82	7.82
7.83	7.83
7.84	7.84
7.85	7.85
7.86	7.86
7.87	7.87
7.88	7.88
7.89	7.89
7.90	7.90
7.91	7.91
7.92	7.92
7.93	7.93
7.94	7.94
7.95	7.95
7.96	7.96
7.97	7.97
7.98	7.98
7.99	7.99
7.100	7.100



proval

Catalogues 2013

Reliable Flow Control Solutions



V101 / V102
DN50 -1200
Actuator Op.
Butterfly
Valves



V101 (Wafer)
V102 (Lug)
DN25-1200
Butterfly
Valves



A210
New
Generation
Pneumatic
Actuators



A250
Mechanical
Proximity
Limit Switch
Boxes



DORUK ENDÜSTRİ
Valve & Automation Systems



A100 Quarter Turn Electric Actuators

Technical Specifications

Protection Class	IP67 (Optional IP68)
Power Supply	24 VDC, 110/220 VAC/1Ph/50/60/Hz, 380/440/VAC/3Ph/50/60/Hz ±10%
Control Power Supply	110/220 VAC/3Ph/50/60/Hz ±10%
Duty Cycle (On-Off)	S2: 10 Min ~ 30 Min / S4: 20~50%
Duty Cycle (Proportional)	S4, 30~50%, 300~1200 Start/Hour
Motor	Induction Motor
Limit Switch	2 Pcs Each Open/Close (SPDT 250VAC/10A) Switches (1 pc Wet and 1 Pc Dry for Each)
Torque Switch	1 Pc Each for Open/Close (SPDT 250VAC/10A) Switches (for Pro 160 and over sizes)
Stall Protection (Set Temp.)	Built In Thermal Protection, Open 150° C ± 5° C, Close 97° C ± 15° C
Travel Angle	90° (0° ~ 100°)
Position Indicator	Continuous Mechanical Indicator
Manual Override	Declutchable Manual Override for PRO100 and Over Sizes
Self Locking	Provided by Double Worm Gearing
Mechanical Stopper	1 Each, External Adjustable for Open and Close Travels
Heater	Anticondensation Heater 5W (110/220 VAC)
Cable Glands	2 - PF 3/4" (1/2" for PRO 40 / 80 / 80 sizes)
Lubrication	EP Type Grease
Terminal Block	Screw and Lever Push Type
Ambient Temperature	Standart Actuators: -20°C~+70°C Proportional Actuators: -10°C~+60°C
Ambient Humidity	90%RH Max (Non Condensing)
Anti Vibration	XYZ 10g. 02~34Hz, 30 Min.
External Coating	Dry Powder Polyester Coating



PRO 160
Electrical Actuator



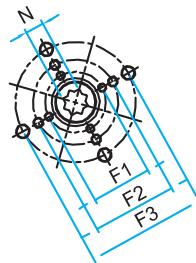
Elec. Actuator Operated
Butterfly Valve



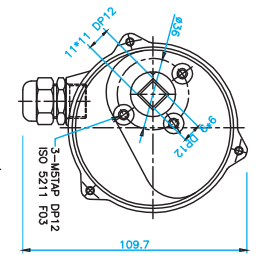
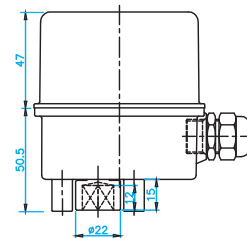
Electric Actuator With
Local Control Unit

Optional Accessories

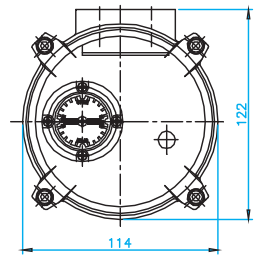
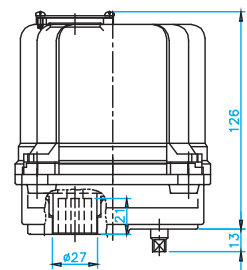
Explosion Proof Type (Ex d B II T4)
IP68 Protection Class (10 mt. Head 100 Hours)
Auxiliary Limit Switches (Max 2 Pcs for Each End)
Potentiometer (1 K Ohm)
RPC - 4-20 mA Remote Proportional Control Unit
Auxiliary Torque Switches (Max 2 Pcs for Each End)
Local Control Unit
4-20 mA Position Transmitter
Fail-Safe Battery Back-Up



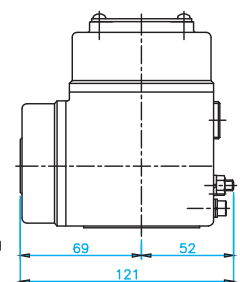
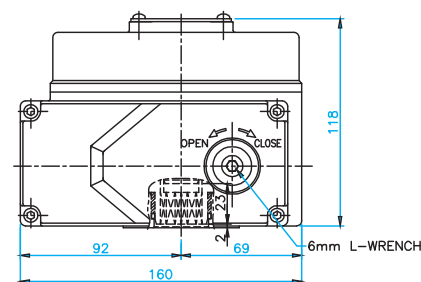
PRO 020 Dimensions



PRO 040 Dimensions



PRO 080 Dimensions



PRO 040 - PRO 080 Model Electric Actuators

Model	Pro 020	Pro 040	Pro 080
Torque	25 Nm	40 Nm	80 Nm
F1/F2/F3	F03	F03/F05/F7	F05/F7
N	11mm	14mm	17mm
O-C Time*	11 Seconds	14 Seconds	16 Seconds
Weight (Kg)	1 Kg	3 Kg	3,5 Kg

* O-C Time indicates the operating time for 90° degree rotation.

PRO100 - PRO9000 Model Electric Actuators

Model	Pro 0100	Pro 0160	Pro 0240	Pro 0350	Pro 0500	Pro 0800	Pro 1100	Pro 2000	Pro 3000	Pro 6000	Pro 9000
Torque	100 Nm	160 Nm	240 Nm	350 Nm	500 Nm	800 Nm	1100 Nm	2000 Nm	3000 Nm	6000 Nm	9000 Nm
ISO Flange	F07	F07-F10	F07-F10	F10-F12	F10-F12	F12-F14	F12-F14	F16	F16	F25-F30	F25-F30
C	Ø70	Ø70	Ø70	Ø102	Ø102	Ø125	Ø125	Ø165	Ø165	Ø254	Ø254
		Ø102	Ø102	Ø125	Ø125	Ø140	Ø140			Ø298	Ø298
A	M8	M8/M10	M8/M10	M10/M12	M10/M12	M12/M16	M12/M16	M20	M20	M20	M20
B	14	14/17	14/17	17/21	20/25	20/25	32	32	32	35	35
D (Key)	Ø22	Ø25	Ø25	Ø40	Ø40	Ø48	Ø48	Ø75	Ø75	Ø120	Ø120
D (Square)	□20	□23	□23	□34	□34	□40	□40	□64	□64	□84	□84
E	Ø50	Ø58.5	Ø80	Ø80	Ø95	Ø95	Ø95	Ø135	Ø135	Ø216	Ø216
F	Ø88	Ø125	Ø125	Ø148	Ø148	Ø178	Ø178	Ø226	Ø226	Ø350	Ø350
G	3	3	3	3	3	3	3	5	5	5	5
H	37	57	57	62	62	67	67	90	90	149	149
S	100	115	115	145	145	170	170	250	250	250	250
X	258	338	338	357	357	380	380	440	440	440	440
Y	172	229	229	244	244	287	287	312	312	417	417
Z	220	259	259	288	288	313	313	385	385	668	668
O-C Time *	21 Sn	26 Sn	26 Sn	31 Sn	31 Sn	39 Sn	39 Sn	59 Sn	59 Sn	178 Sn	178 Sn
Weight (Kg)	7	15	15	20	20	25	25	42	42	152	152

* O-C Time indicates the operating time for 90° degree rotation.

PRO 100 - PRO 3000 Model Electric Actuators

PRO 6000 - PRO 9000 Model Electric Actuators

