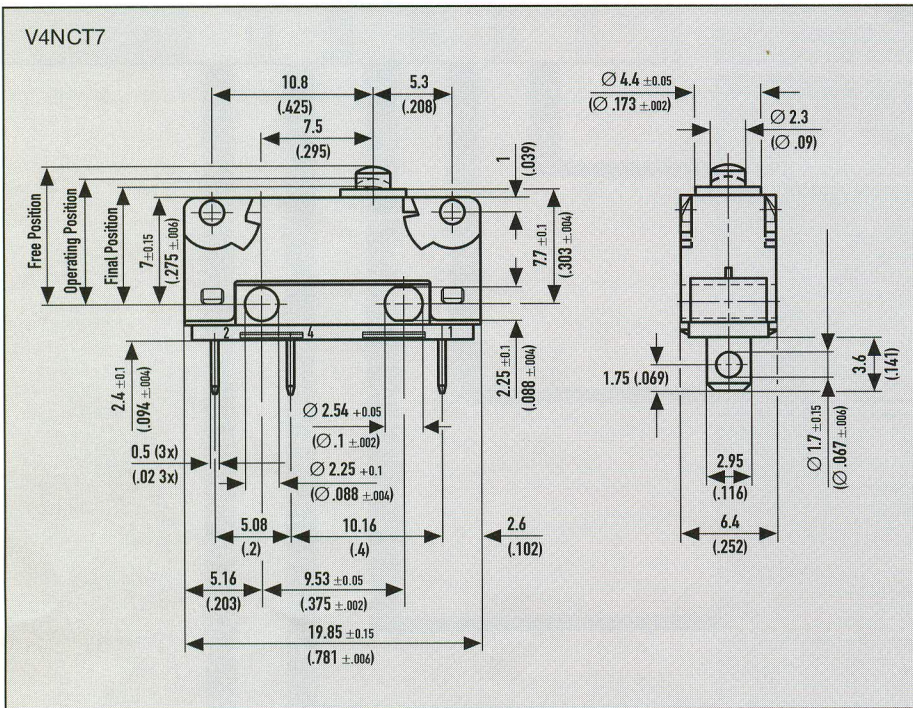
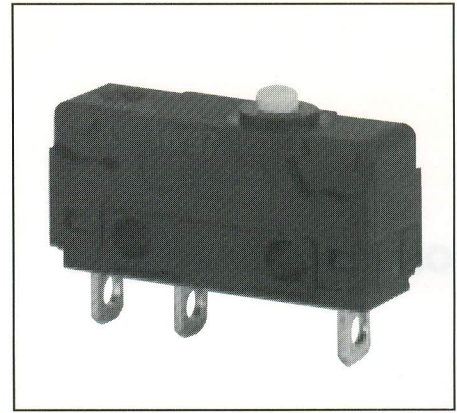


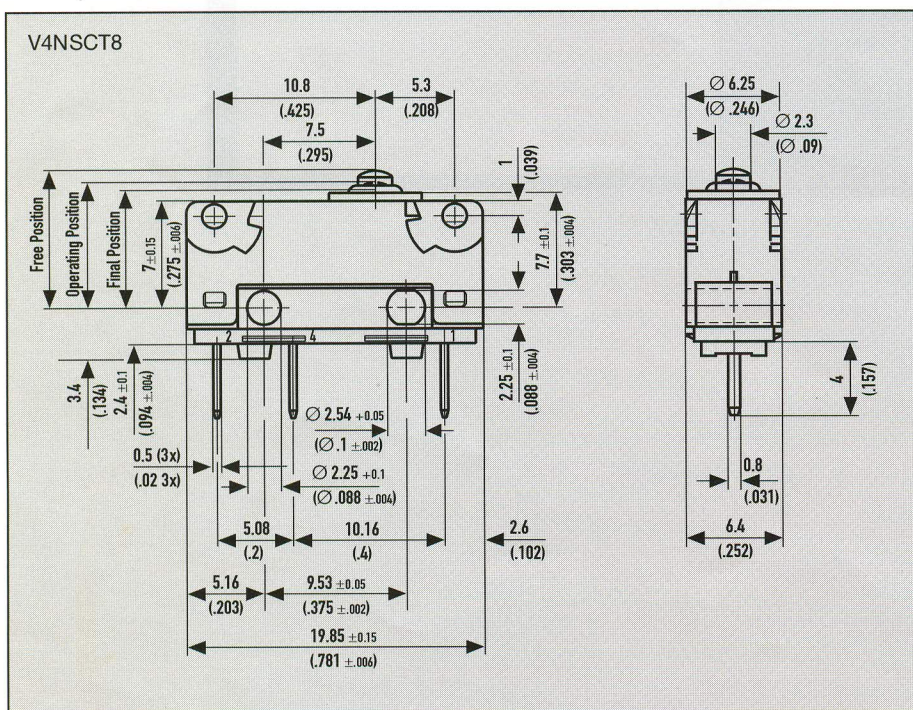
V4NC-Series



An exciting new range of sub-miniature switches embracing a host of innovative design features:

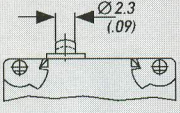
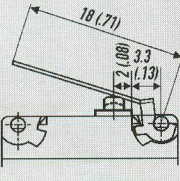
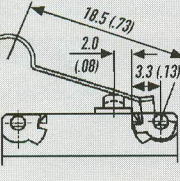
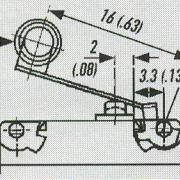
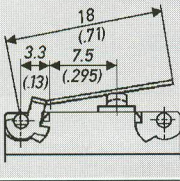
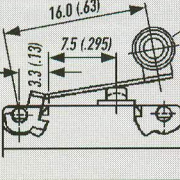
- Seven terminal options all sealed
- Mounting holes or moulded pegs
- Standard and low force models
- Wide range of clip on levers – two styles
- Choice of lever position
- Silver contacts for power switching; gold on silver for logic circuits
- Long overtravel versions
- Snap-on terminal covers

The ultimate in versatility.



Product Range Operating Characteristics

V4NC

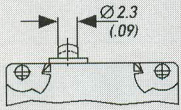
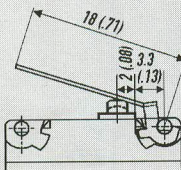
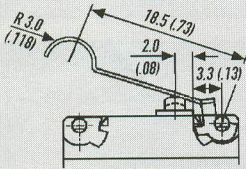
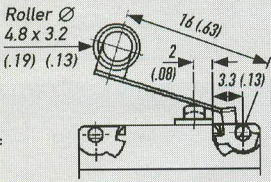
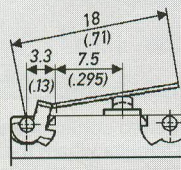
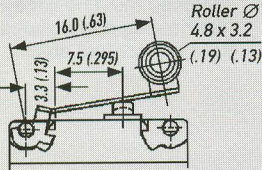
Actuator	Reference	Actuating Force	Release Force	Free Position	Operating Position	Movement Differential	Over Travel
		Maximum N (ozf)	Minimum N (ozf)	Maximum mm (in)	mm (in)	Maximum mm (in)	
Plunger 	V4NC..	1.7 (6.114)	0.3 (1.079)	9.2 (.362)	8.4 (.331)	} (±0.3 mm/±.012 in)	Flush with case. The case should not be used as an end stop.
	V4NC4..	2.5 (8.992)	0.5 (1.798)	9.2 (.362)	8.4 (.331)		
	V4NCE..	1.7 (6.114)	0.3 (1.079)	9.7 (.382)	8.9 (.350)		
	V4NC4E..	2.5 (8.992)	0.5 (1.798)	9.7 (.382)	8.9 (.350)		
	V4NCS..	2.5 (8.992)	0.5 (1.798)	9.2 (.362)	8.4 (.331)		
	V4NC4S..	2.8 (10.071)	0.7 (2.517)	9.2 (.362)	8.4 (.331)		
	V4NCSE..	2.5 (8.992)	0.5 (1.798)	9.7 (.382)	8.9 (.350)		
	V4NC4SE..	2.8 (10.071)	0.7 (2.517)	9.7 (.382)	8.9 (.350)		
A1 Lever Width of lever: 4.0 mm (.16) 	V4NC..	0.8 (2.877)	0.07 (0.251)	13.4 (.527)	10.85 (.427)	} (±1.3 mm/±.051 in)	
	V4NC4..	1.1 (3.956)	0.1 (0.359)	13.4 (.527)	10.85 (.427)		
	V4NCE..	0.8 (2.877)	0.07 (0.251)	14.8 (.582)	12.4 (.488)		
	V4NC4E..	1.1 (3.956)	0.1 (0.359)	14.8 (.582)	12.4 (.488)		
	V4NCS..	0.9 (3.237)	0.1 (0.359)	13.4 (.527)	10.8 (.425)		
	V4NC4S..	1.1 (3.956)	0.15 (0.539)	13.4 (.527)	10.8 (.425)		
	V4NCSE..	0.9 (3.237)	0.1 (0.359)	14.8 (.582)	12.4 (.488)		
	V4NC4SE..	1.1 (3.956)	0.15 (0.539)	14.8 (.582)	12.4 (.488)		
AC1 Lever Width of lever: 4.0 mm (.16) 	V4NC..	0.8 (2.877)	0.07 (0.251)	16.1 (.634)	13.5 (.531)	} (±1.3 mm/±.051 in)	
	V4NC4..	1.1 (3.956)	0.1 (0.359)	16.1 (.634)	13.5 (.531)		
	V4NCE..	0.8 (2.877)	0.07 (0.251)	17.6 (.693)	15.1 (.594)		
	V4NC4E..	1.1 (3.956)	0.1 (0.359)	17.6 (.693)	15.1 (.594)		
	V4NCS..	0.9 (3.237)	0.1 (0.359)	16.1 (.634)	13.4 (.527)		
	V4NC4S..	1.1 (3.956)	0.15 (0.539)	16.1 (.634)	13.4 (.527)		
	V4NCSE..	0.9 (3.237)	0.1 (0.359)	17.6 (.693)	15.1 (.594)		
	V4NC4SE..	1.1 (3.956)	0.15 (0.539)	17.6 (.693)	15.1 (.594)		
AR1 Lever Roller Ø 4.8 x 3.2 (.19) (.13) Width of roller: 4.0 mm (.16) 	V4NC..	0.8 (2.877)	0.07 (0.251)	18.1 (.712)	16.0 (.630)	} (±1.2 mm/±.047 in)	
	V4NC4..	1.2 (4.316)	0.1 (0.359)	18.1 (.712)	16.0 (.630)		
	V4NCE..	0.8 (2.877)	0.07 (0.251)	19.2 (.756)	17.3 (.681)		
	V4NC4E..	1.2 (4.316)	0.1 (0.359)	19.2 (.756)	17.3 (.681)		
	V4NCS..	0.9 (3.237)	0.1 (0.359)	18.1 (.712)	15.9 (.626)		
	V4NC4S..	1.2 (4.316)	0.15 (0.539)	18.1 (.712)	15.9 (.626)		
	V4NCSE..	0.9 (3.237)	0.1 (0.359)	19.2 (.756)	17.3 (.681)		
	V4NC4SE..	1.2 (4.316)	0.15 (0.539)	19.2 (.756)	17.3 (.681)		
A10 Lever Width of lever: 4.0 mm (.16) 	V4NC..	1.3 (4.676)	0.13 (0.467)	10.7 (.421)	9.4 (.370)	} (±0.7 mm/±.027 in)	
	V4NC4..	1.7 (6.114)	0.2 (0.719)	10.7 (.421)	9.4 (.370)		
	V4NCE..	1.3 (4.676)	0.13 (0.467)	11.5 (.453)	10.2 (.401)		
	V4NC4E..	1.7 (6.114)	0.2 (0.719)	11.5 (.453)	10.2 (.401)		
	V4NCS..	1.8 (6.474)	0.2 (0.719)	10.7 (.421)	9.3 (.366)		
	V4NC4S..	2.0 (7.193)	0.3 (1.079)	10.7 (.421)	9.3 (.366)		
	V4NCSE..	1.8 (6.474)	0.2 (0.719)	11.5 (.453)	10.1 (.397)		
	V4NC4SE..	2.0 (7.193)	0.3 (1.079)	11.5 (.453)	10.1 (.397)		
AR10 Lever Roller Ø 4.8 x 3.2 (.19) (.13) Width of roller 4.0 mm (.16) 	V4NC..	1.3 (4.676)	0.13 (0.467)	15.8 (.622)	14.7 (.579)	} (±0.6 mm/±.023 in)	
	V4NC4..	1.9 (6.834)	0.2 (0.719)	15.8 (.622)	14.7 (.579)		
	V4NCE..	1.3 (4.676)	0.13 (0.467)	16.5 (.649)	15.4 (.606)		
	V4NC4E..	1.9 (6.834)	0.2 (0.719)	16.5 (.649)	15.4 (.606)		
	V4NCS..	1.8 (6.474)	0.2 (0.719)	15.8 (.622)	14.7 (.579)		
	V4NC4S..	2.1 (7.553)	0.3 (1.079)	15.8 (.622)	14.7 (.579)		
	V4NCSE..	1.8 (6.474)	0.2 (0.719)	16.5 (.649)	15.4 (.606)		
	V4NC4SE..	2.1 (7.553)	0.3 (1.079)	16.5 (.649)	15.4 (.606)		

Operating characteristics

Operating characteristics shown above are specified from mounting hole centres.

Product Range Operating Characteristics

V4NC

Actuator	Reference	Actuating Force	Release Force	Free Position	Operating Position	Movement Differential	Over Travel
		Maximum N (ozf)	Minimum N (ozf)	Maximum mm (in)	mm (in)	Maximum mm (in)	
Plunger 	V4NC..	1.7 (6.114)	0.3 (1.079)	9.2 (.362)	8.4 (.331)	$(\pm 0.3 \text{ mm} / \pm .012 \text{ in})$	0.1 (.004)
	V4NC4..	2.5 (8.992)	0.5 (1.798)	9.2 (.362)	8.4 (.331)		
	V4NCE..	1.7 (6.114)	0.3 (1.079)	9.7 (.382)	8.9 (.350)		
	V4NC4E..	2.5 (8.992)	0.5 (1.798)	9.7 (.382)	8.9 (.350)		
	V4NCS..	2.5 (8.992)	0.5 (1.798)	9.2 (.362)	8.4 (.331)		
	V4NC4S..	2.8 (10.071)	0.7 (2.517)	9.2 (.362)	8.4 (.331)		
	V4NCSE..	2.5 (8.992)	0.5 (1.798)	9.7 (.382)	8.9 (.350)		
	V4NC4SE..	2.8 (10.071)	0.7 (2.517)	9.7 (.382)	8.9 (.350)		
A1 Lever Width of lever: 4.0 mm (.16) 	V4NC..	0.8 (2.877)	0.07 (0.251)	13.4 (.527)	10.85 (.427)	$(\pm 1.3 \text{ mm} / \pm .051 \text{ in})$	0.4 (.016)
	V4NC4..	1.1 (3.956)	0.1 (0.359)	13.4 (.527)	10.85 (.427)		
	V4NCE..	0.8 (2.877)	0.07 (0.251)	14.8 (.582)	12.4 (.488)		
	V4NC4E..	1.1 (3.956)	0.1 (0.359)	14.8 (.582)	12.4 (.488)		
	V4NCS..	0.9 (3.237)	0.1 (0.359)	13.4 (.527)	10.8 (.425)		
	V4NC4S..	1.1 (3.956)	0.15 (0.539)	13.4 (.527)	10.8 (.425)		
	V4NCSE..	0.9 (3.237)	0.1 (0.359)	14.8 (.582)	12.4 (.488)		
	V4NC4SE..	1.1 (3.956)	0.15 (0.539)	14.8 (.582)	12.4 (.488)		
AC1 Lever Width of lever: 4.0 mm (.16) 	V4NC..	0.8 (2.877)	0.07 (0.251)	16.1 (.634)	13.5 (.531)	$(\pm 1.3 \text{ mm} / \pm .051 \text{ in})$	0.4 (.016)
	V4NC4..	1.1 (3.956)	0.1 (0.359)	16.1 (.634)	13.5 (.531)		
	V4NCE..	0.8 (2.877)	0.07 (0.251)	17.6 (.693)	15.1 (.594)		
	V4NC4E..	1.1 (3.956)	0.1 (0.359)	17.6 (.693)	15.1 (.594)		
	V4NCS..	0.9 (3.237)	0.1 (0.359)	16.1 (.634)	13.4 (.527)		
	V4NC4S..	1.1 (3.956)	0.15 (0.539)	16.1 (.634)	13.4 (.527)		
	V4NCSE..	0.9 (3.237)	0.1 (0.359)	17.6 (.693)	15.1 (.594)		
	V4NC4SE..	1.1 (3.956)	0.15 (0.539)	17.6 (.693)	15.1 (.594)		
AR1 Lever Width of roller: 4.0 mm (.16) Roller \varnothing 4.8 x 3.2 (.19) (.13) 	V4NC..	0.8 (2.877)	0.07 (0.251)	18.1 (.712)	16.0 (.630)	$(\pm 1.2 \text{ mm} / \pm .047 \text{ in})$	0.4 (.016)
	V4NC4..	1.2 (4.316)	0.1 (0.359)	18.1 (.712)	16.0 (.630)		
	V4NCE..	0.8 (2.877)	0.07 (0.251)	19.2 (.756)	17.3 (.681)		
	V4NC4E..	1.2 (4.316)	0.1 (0.359)	19.2 (.756)	17.3 (.681)		
	V4NCS..	0.9 (3.237)	0.1 (0.359)	18.1 (.712)	15.9 (.626)		
	V4NC4S..	1.2 (4.316)	0.15 (0.539)	18.1 (.712)	15.9 (.626)		
	V4NCSE..	0.9 (3.237)	0.1 (0.359)	19.2 (.756)	17.3 (.681)		
	V4NC4SE..	1.2 (4.316)	0.15 (0.539)	19.2 (.756)	17.3 (.681)		
A10 Lever Width of lever: 4.0 mm (.16) 	V4NC..	1.3 (4.676)	0.13 (0.467)	10.7 (.421)	9.4 (.370)	$(\pm 0.7 \text{ mm} / \pm .027 \text{ in})$	0.2 (.008)
	V4NC4..	1.7 (6.114)	0.2 (0.719)	10.7 (.421)	9.4 (.370)		
	V4NCE..	1.3 (4.676)	0.13 (0.467)	11.5 (.453)	10.2 (.401)		
	V4NC4E..	1.7 (6.114)	0.2 (0.719)	11.5 (.453)	10.2 (.401)		
	V4NCS..	1.8 (6.474)	0.2 (0.719)	10.7 (.421)	9.3 (.366)		
	V4NC4S..	2.0 (7.193)	0.3 (1.079)	10.7 (.421)	9.3 (.366)		
	V4NCSE..	1.8 (6.474)	0.2 (0.719)	11.5 (.453)	10.1 (.397)		
	V4NC4SE..	2.0 (7.193)	0.3 (1.079)	11.5 (.453)	10.1 (.397)		
AR10 Lever Width of roller 4.0 mm (.16) Roller \varnothing 4.8 x 3.2 (.19) (.13) 	V4NC..	1.3 (4.676)	0.13 (0.467)	15.8 (.622)	14.7 (.579)	$(\pm 0.6 \text{ mm} / \pm .023 \text{ in})$	0.2 (.008)
	V4NC4..	1.9 (6.834)	0.2 (0.719)	15.8 (.622)	14.7 (.579)		
	V4NCE..	1.3 (4.676)	0.13 (0.467)	16.5 (.649)	15.4 (.606)		
	V4NC4E..	1.9 (6.834)	0.2 (0.719)	16.5 (.649)	15.4 (.606)		
	V4NCS..	1.8 (6.474)	0.2 (0.719)	15.8 (.622)	14.7 (.579)		
	V4NC4S..	2.1 (7.553)	0.3 (1.079)	15.8 (.622)	14.7 (.579)		
	V4NCSE..	1.8 (6.474)	0.2 (0.719)	16.5 (.649)	15.4 (.606)		
	V4NC4SE..	2.1 (7.553)	0.3 (1.079)	16.5 (.649)	15.4 (.606)		

Flush with case.
The case should not be used as an end stop.

Operating characteristics

Operating characteristics shown above are specified from mounting hole centres.

Ordering References

V4NC

Switch range:	V4NC						
Actuating Force No symbol = Standard force 4 High force							
Type of Sealing No symbol = Unsealed S Sealed IP 6K7							
Overtravel No symbol = Standard E With extended over travel							
Terminal types 							
Circuit No symbol = Changeover C2 Normally closed C4 Normally open							
Actuators No symbol = Plunger <table border="0"> <tr> <td>A1 Plain lever 18.0 mm (.71 in)</td> <td>A7 Plain lever 60.0 mm (2.36 in)</td> </tr> <tr> <td>A2 Plain lever 25.0 mm (.98 in)</td> <td>AC1 Cam follower 18.5 mm (.73 in)</td> </tr> <tr> <td>A3 Plain lever 32.0 mm (1.26 in)</td> <td>AR1 Roller lever 16.0 mm (.63 in)</td> </tr> </table> <p>Levers fitted at end nearest to Plunger. an attached "0" such as A10, AR10 specifies fixing at end of the opposite to plunger.</p>	A1 Plain lever 18.0 mm (.71 in)	A7 Plain lever 60.0 mm (2.36 in)	A2 Plain lever 25.0 mm (.98 in)	AC1 Cam follower 18.5 mm (.73 in)	A3 Plain lever 32.0 mm (1.26 in)	AR1 Roller lever 16.0 mm (.63 in)	
A1 Plain lever 18.0 mm (.71 in)	A7 Plain lever 60.0 mm (2.36 in)						
A2 Plain lever 25.0 mm (.98 in)	AC1 Cam follower 18.5 mm (.73 in)						
A3 Plain lever 32.0 mm (1.26 in)	AR1 Roller lever 16.0 mm (.63 in)						
Mounting No symbol = Mounting holes B... several mounting pegs on request							
Contacts No symbol = Fine silver AUX Gold alloy on silver palladium crosspoint GP Gold plate on silver Ni1 Silver-Nickel contact							