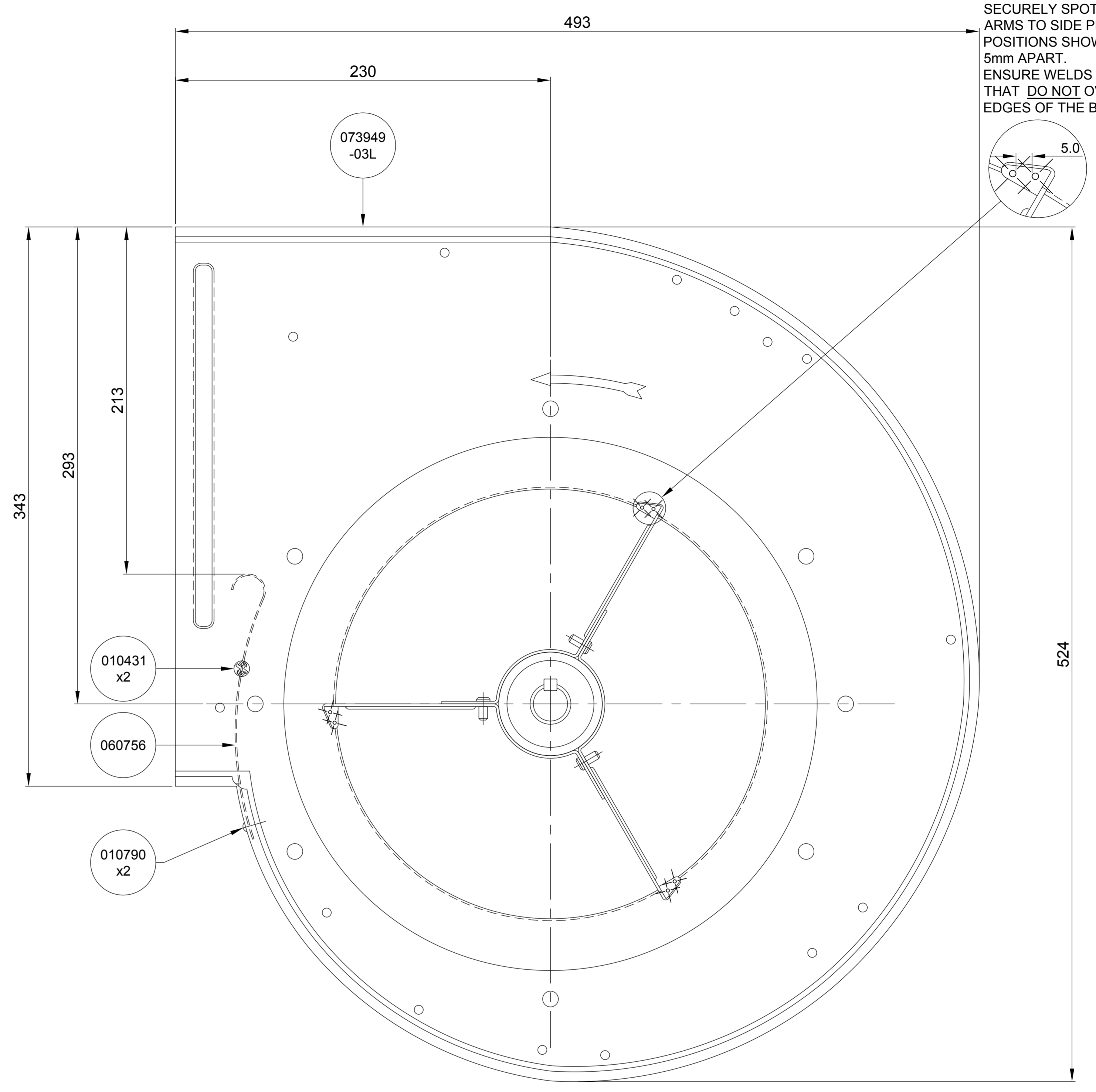
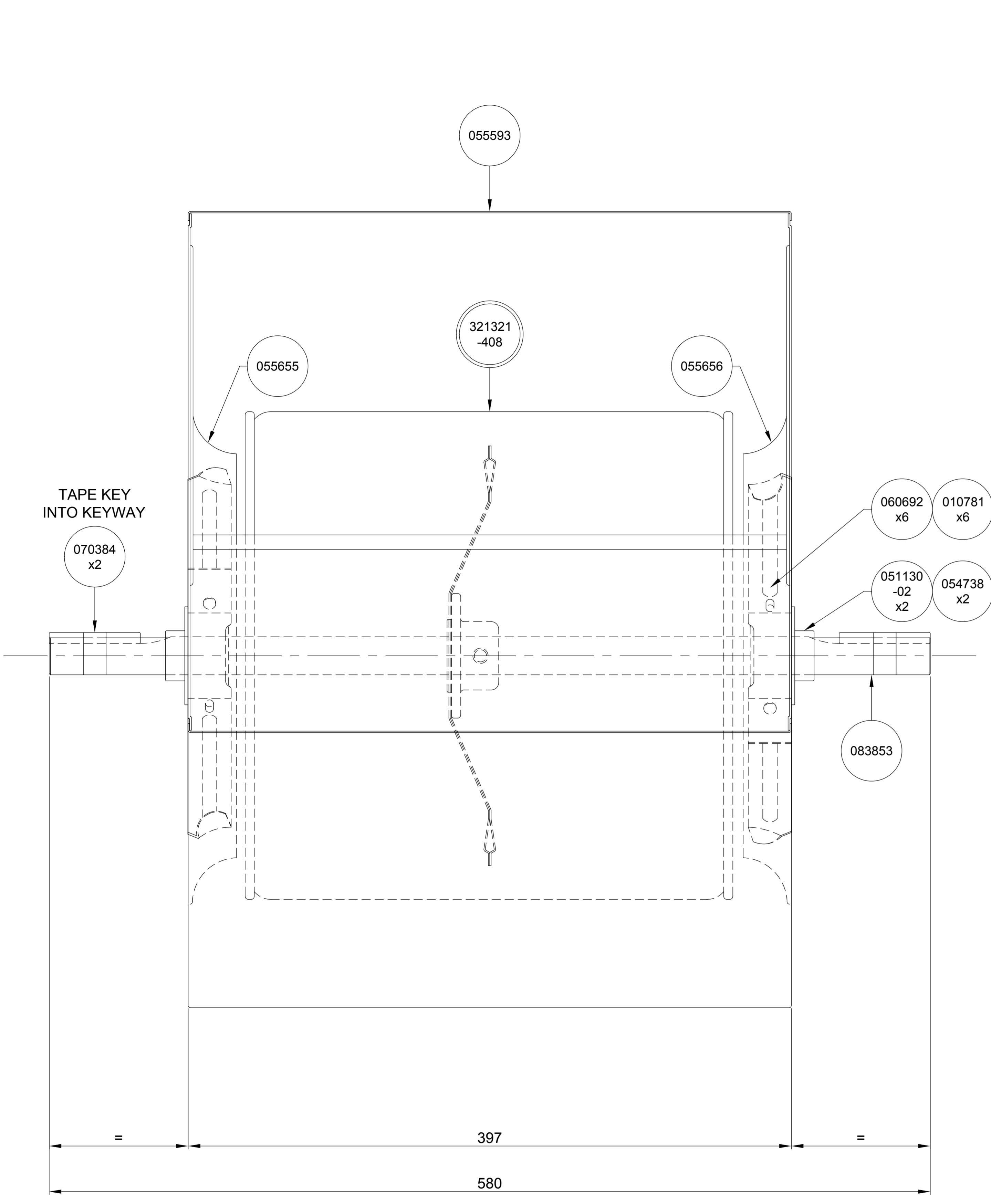
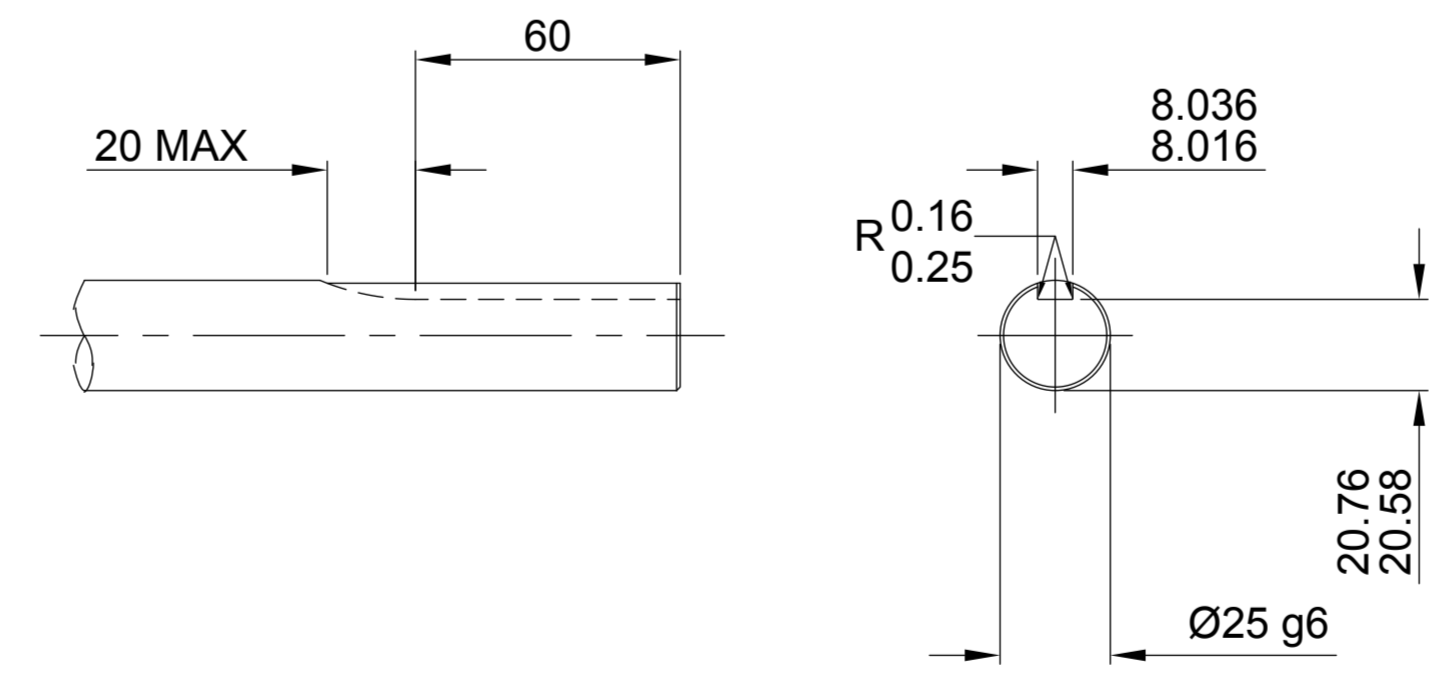


1
2
3
4
5
6
7
8
9



SECURELY SPOTWELD BEARING ARMS TO SIDE PLATE IN APPROX POSITIONS SHOWN THUS:-
5mm APART.
ENSURE WELDS ARE FULL SPOTS THAT DO NOT OVERLAP THE EDGES OF THE BEARING ARMS.



SHAFT DETAIL
APPLY ANTI-CORROSIVE (010872) TO SHAFT

torin-sifan ce

The Partner of Choice

Model Number:	073949-03 ISS
ALDES Part Number:	11025986
Description:	BDC321-321
Overall Efficiency:	N/A
Measurement Type:	B
Efficiency Type:	Total
FEG:	75
VSD:	Not required
Electrical Supply:	N/A
Input Power:	N/A
Input Current:	N/A
Insulation Class:	N/A
IP Rating:	N/A
Date / W.O. / Serial:	WW/YY XXXXXX 0001

LABEL DETAIL

NOTES:-
ALL UNTOLERANCED DIMENSIONS ARE FOR REFERENCE PURPOSES ONLY.
WARNING - ROTATING PARTS. HANDLING, INSTALLATION AND GUARDING PRECAUTIONS MUST BE TAKEN.
THIS PRODUCT IS INTENDED FOR USE WITHIN THIRD PARTY OEM EQUIPMENT. CORRECT GUARDING AND INTERLOCKING ARE THE RESPONSIBILITY OF THE THIRD PARTY OEM EQUIPMENT MANUFACTURER. THIS EQUIPMENT SHOULD NOT BE OPERATED WITHOUT APPROPRIATE GUARDS AND INTERLOCKS IN PLACE. INSTRUCTIONS AND MARKING FOR SAFE USE IN APPLICATION ARE THE RESPONSIBILITY OF THE THIRD PARTY OEM EQUIPMENT MANUFACTURER.
CARE SHOULD BE TAKEN DURING HANDLING - SHARP/POINTED EDGES MAY EXIST ON THE PRODUCT.
CARRY OUT PULL TEST ON WELDS BETWEEN THE BEARING ARM (060692) AND SIDE PLATE (055655/055656). TEST SHOULD BE CARRIED OUT ON EVERY 1 OUT OF 20 UNITS.

2	SPECIFY WELDING OF BEARING ARM & S/PLATE	15/06/15	19535
1	ISSUED	02/12/13	19212
ISS. MODIFICATION		DATE	C/N NO.

MATERIAL
GALVANISED STEEL

FINISH
NATURAL

FIRST USED ON

SIMILAR TO
073949-02

DIRECTORY PATH
VASY\BDC\321-321\073949-03

TITLE
BDC321-321 25mm

DRAWING NO.
073949-03

Torin Limited
Drakes Way
Swindon Wiltshire
SN3 3JB
Tel : (01793) 524291

THIS DRAWING AND SPECIFICATIONS IS THE EXCLUSIVE PROPERTY OF TORIN LIMITED. ISSUED IN STRICT CONFIDENCE AND SHALL NOT BE REPRODUCED, COPIED OR USED FOR ANY REASON OTHER THAN WHICH IT IS ISSUED, WITHOUT THE WRITTEN PERMISSION OF TORIN LIMITED.

© TORIN LIMITED

PRODUCT TYPE:	
TECH 1: AC <input checked="" type="checkbox"/> EC <input type="checkbox"/>	
TECH 2: AC <input type="checkbox"/> BD <input checked="" type="checkbox"/> CP <input type="checkbox"/> DC <input type="checkbox"/> ECI <input type="checkbox"/> ECR <input type="checkbox"/>	
ERP DIRECTIVE: Y	Ng/EN ARTICLE: 75

PROJECTION

DRAWING GENERALLY CONFORMS TO BS 8888

ALL BS TO LATEST ISSUE

DR. SM	CHKD	AP.	A2
DATE 02/12/13	DATE	DATE	
DIMENSIONS IN MILLIMETRES			
SCALE: N.T.S. (UNLESS OTHERWISE STATED)			

073949-03

DRAWING NO.