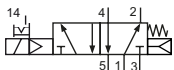


Technical details

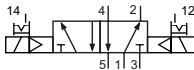
Connection	G1/8
Temperature range	-10°C ... +70°C
Medium	Filtered, oil-free and dried compressed air according to ISO 8573-1:2010, Class 7:2:4, instrument air, free of aggressive additives. Alternatively the pressure dew point must be at least 10°C below lowest occurring ambient temperature.
Materials	Body: Al (anodized), plastic, seals: NBR, inner parts: Al, steel and plastic
Protection	IP 65 according to EN 60529



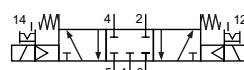
Electrically operated spool valve. The manual override is detent/ non-detent and is operated by screwdriver.

5/2-way valves


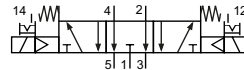
86-MV-5-18-511-xxx
5/2-way, single solenoid, mechanical spring return and air spring return



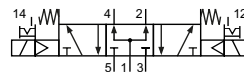
86-MV-5-18-520-xxx
5/2-way, double solenoid

5/3-way valves


86-MV-5-18-530-xxx
5/3-way, center position closed



86-MV-5-18-533-xxx
5/3-way, center position exhausted



86-MV-5-18-534-xxx
5/3-way, center position pressurized

Please complete: xxx = electrical option

Electrical options

Nominal voltage	Power consumption	Specifics	Plug connection*1	-XXX Manual override on same side of ports 2 and 4
24 V DC	2.5 W		Form C industrial norm	-M42
220 V AC	2.5 VA		Form C industrial norm	-M57

*1 Plug socket with integrated LED are part of delivery

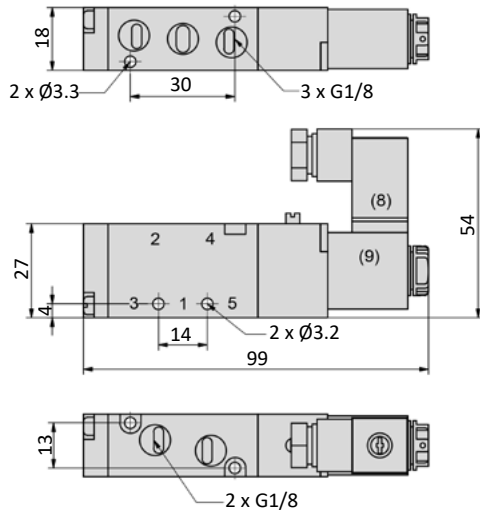
Technical data

Model-no.:	86-MV-5-18-511	86-MV-5-18-520	86-MV-5-18-530	86-MV-5-18-533	86-MV-5-18-534
Operating pressure (bar)	1.5...8	1.5...8	1.5...8	1.5...8	1.5...8
Nominal size (mm)	4	4	3.5	3.5	3.5
Flow rate (NI/min)	650	650	480	480	480
Response time (ms) at 6 bar	20	20	20	20	20
Weight (kg)	0.115	0.170	0.190	0.190	0.190

Series 86-MV-5-18

Dimensions

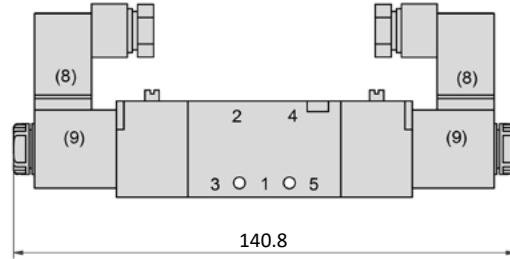
86-MV-5-18-511



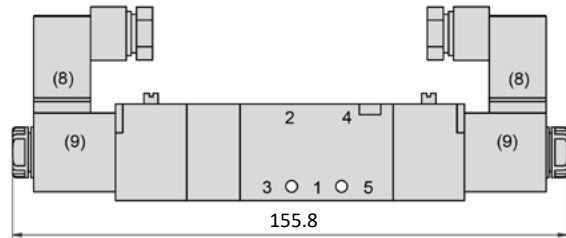
- 1 = pressure inlet
- 2,4 = outlets
- 3,5 = exhausts

Plug socket can be repositioned by 180°.
Solenoid coil can be repositioned by 4 x 90°.

86-MV-5-18-520



86-MV-5-18-53x



General information

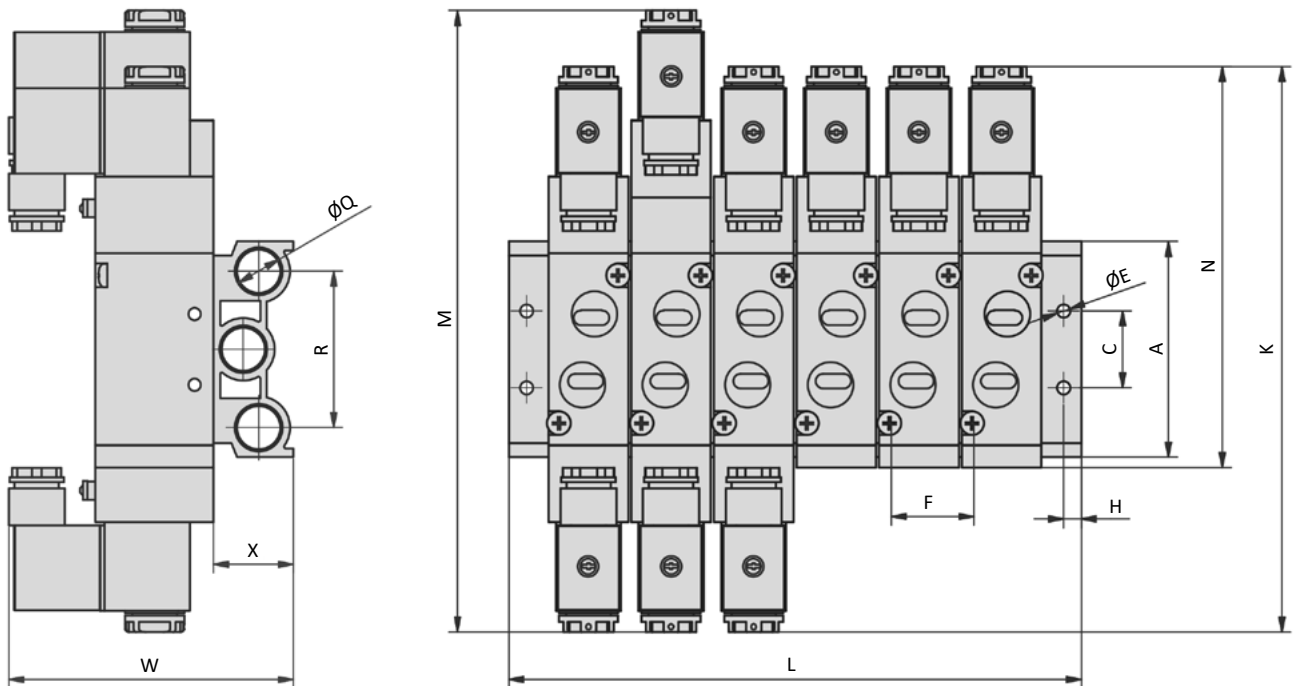
The 86-PRS manifolds are suitable for the 86-MV-5 valve series.
Blind plates 86-PRS-xxx-V are available for blank stations.
All mounting screws and o-rings are included.



Order code

Series		Number of stations	
86-PRS-***-**		02...20	
Size		Size	Standard
MVY	for series 86-MVY-18	MVY	04, 06, 08, 10, 12
100	for series 86-MV-5-18	100	02, 04, 06, 08, 10, 12, 14, 16
200	for series 86-MV-5-28, 86-MV-5-14	200	02, 04, 05, 06, 08, 10, 12, 14, 16
300	for series 86-MV-5-24, 86-MV-5-38	300	02, 04, 06
400	for series 86-MV-5-12	400	02, 04

Dimensions



Model-no.:	A	C	Ø E	F	H	K	L	M	N	Q	R	W	X
86-PRS-MVY-xx	60	20	4.2	16	5	119	(xx-1)*16 + 34	132	92	G1/4	41	57	26.5
86-PRS-100-xx	58	20	4.2	19	5	140	(xx-1)*19 + 38	155	98	G1/4	40	77	22
86-PRS-200-xx	59	21	4.3	23	6	170	(xx-1)*23 + 46	189	116	G1/4	43	90	22
86-PRS-300-xx	75	26	4.5	28	6	189	(xx-1)*28 + 54	208	134	G3/8	53	98	27
86-PRS-400-xx	98	32	5.5	35	7	222	(xx-1)*35 + 63	243	168	G1/2	68	112	36

xx = number of stations

Plug sockets

Form C industrial norm

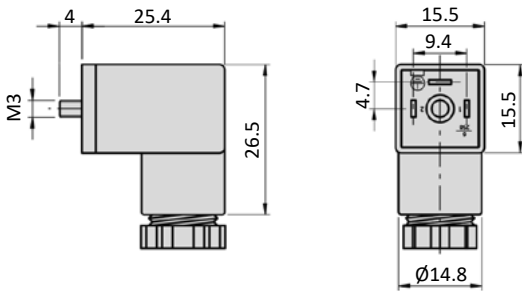
Overall width	15 mm
Contact distance	9.4 mm
Contacts	2P + E
Protection	IP 65 according to EN 60529 requires a flat gasket
For use with series	86-MV-5-18



Model-no.:	28-ST-02-01	86-ST-09-112	86-ST-09-127
Voltage (AC/DC)	0 - 250 V	24 V DC	220 V AC
Status indicator	no	yes	yes
Protective circuit	no	no	no
Connecting cable	without	without	without
Wire cross section	max. 0.75 mm ²	max. 0.75 mm ²	max. 0.75 mm ²
Ø Connecting cable	4 - 6 mm	4 - 6 mm	4 - 6 mm

Dimensions

Form C industrial norm



Form C industrial norm

Overall width	15 mm
Contact distance	9.4 mm
Contacts	2P + E
Protection	IP 65 according to EN 60529 with connected plug socket
Duty cycle	100 %
Temperature range*	-20°C...+50°C
Voltage tolerance	± 10 %
For use with series	86-MV-5-18

* The max. applicable operating temperature depends on the temperature specification of the used valve.



Model-no.:	86-SP-021-412	86-SP-021-427
Voltage	24 V DC	220 V AC
Power consumption DC	2.5 W	-
Power consumption AC	-	2.5 VA