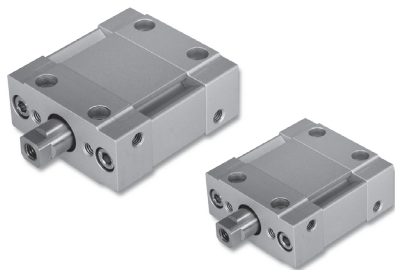


# JM series Oval Piston Plate Cylinder

## Product features

CHELIC

### Internal structure



### Specification

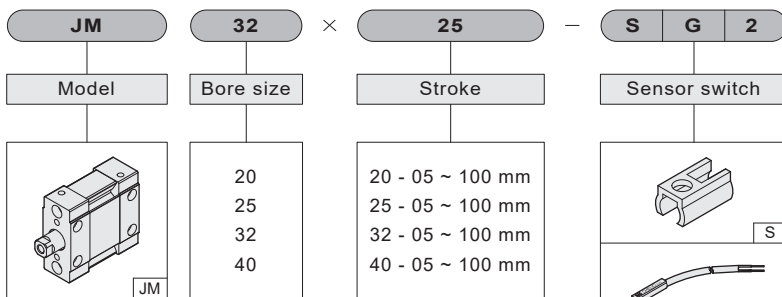
Item	Model	20	25	32	40
Action		Double acting			
Fluid		Air			
Pressure range	Kgf/cm <sup>2</sup> (kPa)	2 ~ 6 ( 200 ~ 600 )			
Max. operating pressure	Kgf/cm <sup>2</sup> (kPa)	6.5 ( 650 )			
Ambient and fluid temperature	℃	0 ~ 60			
Piston speed	mm/s	100 ~ 500			
Lubrication		Lubrication free type			
Port size		M5		PT 1/8"	
Cushion		Rubber cushion			

### Theoretical force (kgf)

Model	Acting	Air pressure (kgf/cm <sup>2</sup> )					
		1	2	3	4	5	6
JM 20	Push	3.2	6.4	9.6	12.8	16.0	19.2
	Pull	2.4	4.8	7.2	9.6	12.0	14.4
JM 25	Push	4.9	9.8	14.7	19.6	24.5	29.4
	Pull	3.7	7.4	11.1	14.8	18.5	22.2
JM 32	Push	8.0	16.0	24.0	32.0	40.0	48.0
	Pull	6.4	12.8	19.2	25.6	32.0	38.4
JM 40	Push	13.1	26.1	39.3	52.4	65.5	78.6
	Pull	11.1	22.2	33.3	44.4	55.5	66.6

※ Note: Above are theoretical data for reference. While applying the product, please do consider the frictional resistance and the mechanical efficiency of valve should be added calculation before using. (Above 70% ~ 80%)

### Code of order



**JM:**  
Oval piston plate cylinder

None: No magnet and sensor switch holder

[S] : With sensor switch holder

[G] : Sensor switch code ( CS-8G )  
(Only for 30mm stroke above)

[B] : Sensor switch code ( CS-8B )  
(For any stroke)

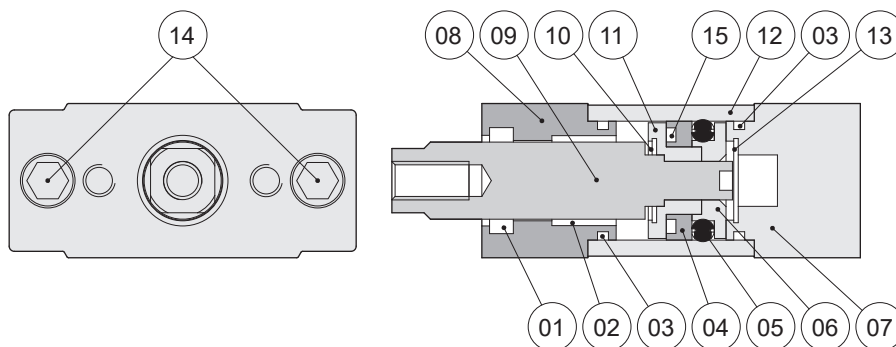
[2] : Number of Sensor switch  
1 = 1 PCS 2 = 2 PCS  
(Option)

# JM series Oval Piston Plate Cylinder

## Product features

CHELIC

### Internal structure



### Components and material list

No.	Item	Material	No.	Item	Material
01	Shaft packing	NBR	09	Shaft	Carbon steel
02	Bearing	Compound material	10	Cushion gasket	NBR
03	O-ring	NBR	11	Magnet cap	Aluminum alloy
04	Wear ring	POM	12	Body	Aluminum alloy
05	Piston O-ring	NBR	13	Cushion gasket	NBR
06	Piston	Aluminum alloy	14	End cap screw	Alloy steel
07	Rear cover	Aluminum alloy	15	Magnet	Rare earth material
08	Front cover	Aluminum alloy			

### Packing and O-ring part list

Item	Piston Packing	Shaft packing	End cap O-ring
quantity	1	1	2
Model	Customized(NBR65-75)		
JM 20		EM-1014	Ø18 x Ø1.5
JM 25		EM-1214	Ø22.86 x Ø1.58
JM 32		EM-1418	Ø30 x Ø1.5
JM 40		EM-1620	Ø40 x Ø2

NA

NA2

NB

NU

ND

NQ

MSI

JQ

JD

JG

JTD

JTF

JCB

JCF

JE

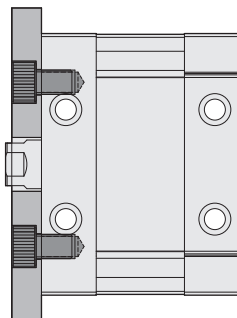
JM

# JM series Oval Piston Plate Cylinder

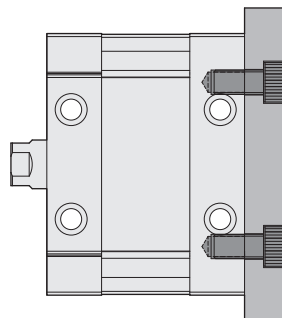
## Mounting type

CHELIC

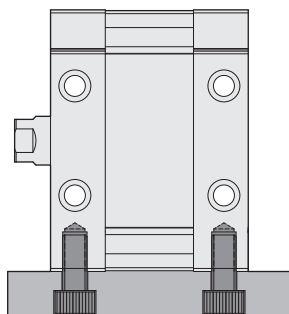
### Mounting type



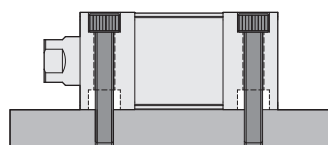
Axial mounting



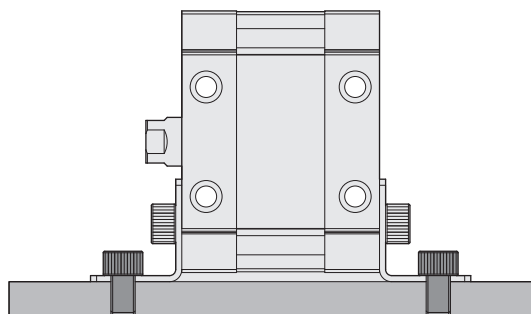
Axial mounting



Bottom mounting



Bottom mounting



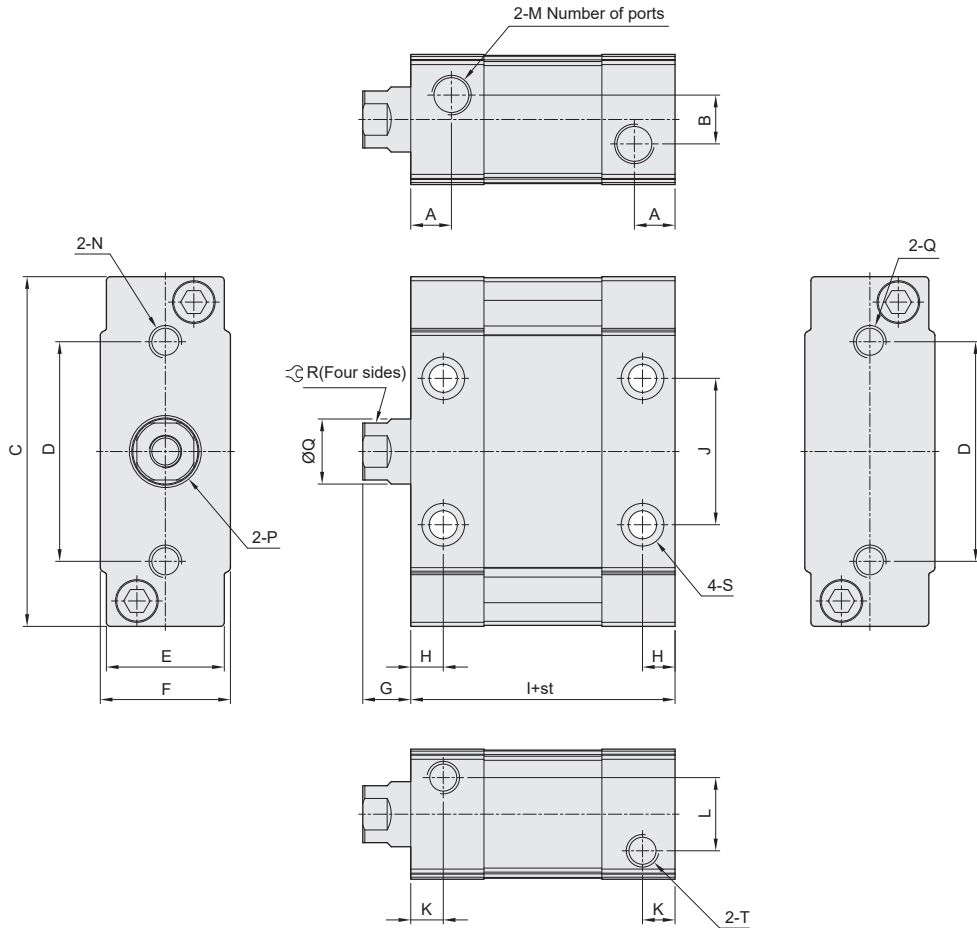
With bracket mounting

# JM series Oval Piston Plate Cylinder

## Dimension

CHELIC

● JM 20 ~ 40



Model	A	B	C	D	E	F	G	H	I	J	K	L	M	N
JM 20	6.8	10	47	22	18.6	22	10	3.5	42.5	22	5	10	M5x0.8P	M4x0.7Px8dp
JM 25	10	12	54	26	22	24	14	6	53.9	26	9	14	M5x0.8P	M5x0.8Px11dp
JM 32	9	10	68	42	25	28	14	6.5	53	28	6.5	16	PT 1/8"	M6x1.0Px11dp
JM 40	10	12	86	54	29	32	11.8	8	60	36	8	18	PT 1/8"	M8x1.25Px11dp

Model	P	ØQ	R	S	T
JM 20	M5x0.8Px8dp	10	8	Ø3.3 Through hole / sunk head screw Ø6x3.5dp (Both sides)	M4x0.7Px6dp
JM 25	M6x1.0Px12dp	12	10	Ø4.3 Through hole / sunk head screw Ø7.5x4.5dp (Both sides)	M5x0.8Px7.5dp
JM 32	M8x1.25Px13dp	14	12	Ø5.1 Through hole / sunk head screw Ø9x5.5dp (Both sides)	M6x1.0Px10dp
JM 40	M8x1.25Px13dp	16	14	Ø6.5 Through hole / sunk head screw Ø10.5x6.5dp (Both sides)	M8x1.25Px13dp

NA

NA2

NB

NU

ND

NQ

MSI

JQ

JD

JG

JTD

JTF

JCB

JCF

JE

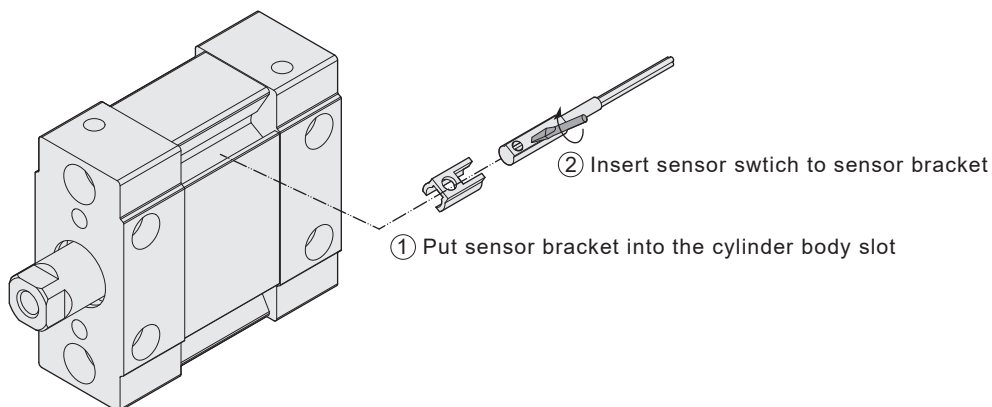
JM

# JM series Oval Piston Plate Cylinder

## Sensor switch operating range and the setting

CHELIC

### ▶ Sensor switch installation



### ▶ Sensing range

Sensor switch is fixed on the cylinder body. The magnetic piston head will activate the Sensor switch when it enters the operating range. It has 0.5mm differential.

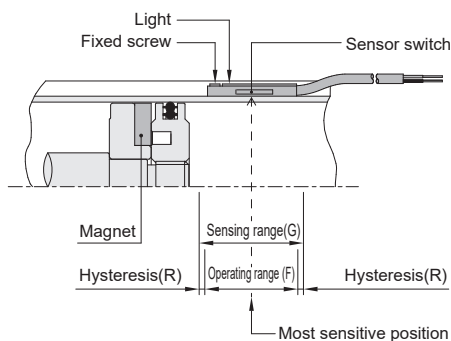
### ▶ Operating range

When piston head moves the switch setting and adjustment will be based on the responding range generated by the magnetic field and the switch. (Please refer to the below table)

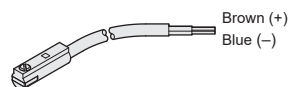
Unit: mm

Model	CS-8G / CS-8B	
Bore size	Operating range (F)	Hysteresis(R)
JM 20	2.0	1.0
JM 25	2.0	1.0
JM 32	2.2	1.0
JM 40	2.2	1.0

### ▶ Sensor switch setting and operating range



### ▶ Sensor switch introduction



#### CS-8G/ CS-8B

Voltage: DC 5 ~ 30 V

AC 5 ~ 30 V