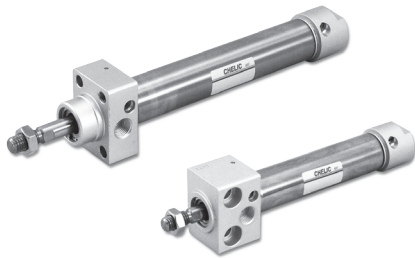


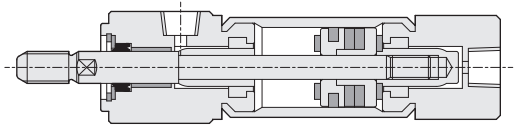
DBF(S)2 series Vertical-mounted Air Cylinder

Product Features

CHELIC



Internal structure



Expression

- The material of the barrel is changed to stainless steel and is harder.
- Wearing ring is added and the life cycle is longer.
- Cushion can reduce the shock to end cap.

Design revision

- New Model: DBF2, DBS2 series (Stainless steel)
- Old Model: DBF, DBS series (Aluminum)
- Ø30 is unavailable; Ø32 is available

Specification

Item	Bore size (mm)	Ø20 ~ Ø40
Action		Double acting
Fluid		Air
Mounting type		Side mounting, Front mounting
Pressure range	Kgf/cm ² (kPa)	1 ~ 7 (100 ~ 700)
Max. operating pressure	Kgf/cm ² (kPa)	9 (900)
Ambient and fluid temperature	°C	0 ~ 60
Piston speed	mm/s	50 ~ 700
Barrel material		Stainless steel
Cushion		Rubber washer/ Air cushioning
Lubrication		Lubrication free type
Bore size		PT 1/8
Sensor switch		With magnet

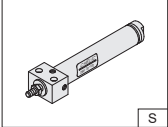
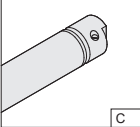
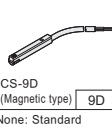
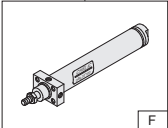
Standard stroke

Unit: mm

Bore size	Standard stroke	Max. stroke	Maximum
Ø20	25, 50, 75, 100, 150, 200	200	500
Ø25	25, 50, 75, 100, 150, 200	200	
Ø32	25, 50, 75, 100, 150, 200	200	
Ø40	25, 50, 75, 100, 150, 200, 250, 300	300	

- Add: With cushion (Optional)

Code of order

DB	F 2	25	150	×	C	9D	20S										
Model	Mounting type	Bore size	Stroke		Cushion	Sensor switch	Mounting bracket										
Block cylinder	 DBS2: Side mounting type	20 – Ø20 mm 25 – Ø25 mm 32 – Ø32 mm 40 – Ø40 mm	25 – Ø25 mm 50 – Ø50 mm 75 – Ø75 mm 100 – Ø100 mm 125 – Ø125 mm 150 – Ø150 mm 175 – Ø175 mm 200 – Ø200 mm		 None: No Cushion [C]: With Cushion	 CS-9D (Magnetic type) None: Standard	<table border="1"> <thead> <tr> <th>Mark</th> <th>Cylinder (Inner dia.)</th> </tr> </thead> <tbody> <tr> <td>20S</td> <td>Ø20</td> </tr> <tr> <td>25S</td> <td>Ø25</td> </tr> <tr> <td>32S</td> <td>Ø32</td> </tr> <tr> <td>40S</td> <td>Ø40</td> </tr> </tbody> </table>	Mark	Cylinder (Inner dia.)	20S	Ø20	25S	Ø25	32S	Ø32	40S	Ø40
Mark	Cylinder (Inner dia.)																
20S	Ø20																
25S	Ø25																
32S	Ø32																
40S	Ø40																
	 DBF2: Front mounting type		※ Refer to stroke list														

SBA

SDA

SDX

DBS2

DBF2

DBT

FDA

DBF(S)2 series Vertical-mounted Air Cylinder

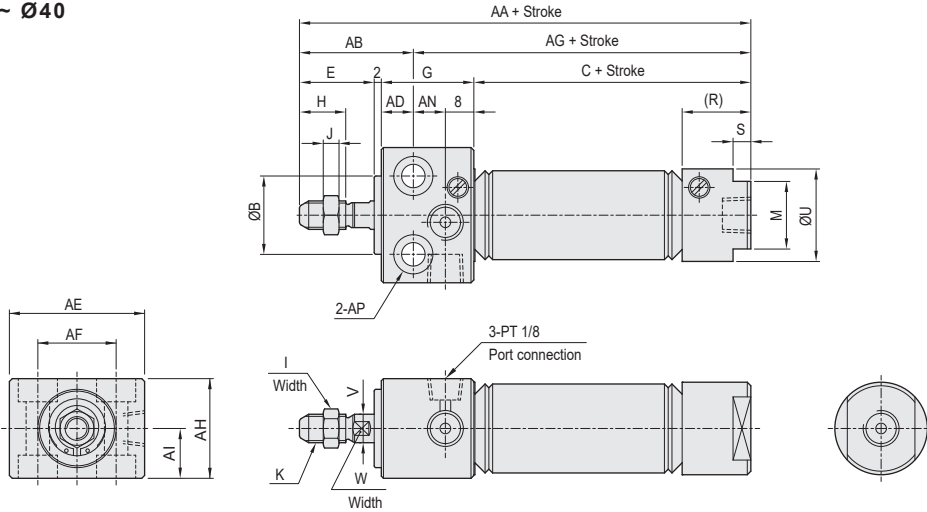
Dimension

CHELIC

DBS2 series - Side mounting type



● Ø20 ~ Ø40



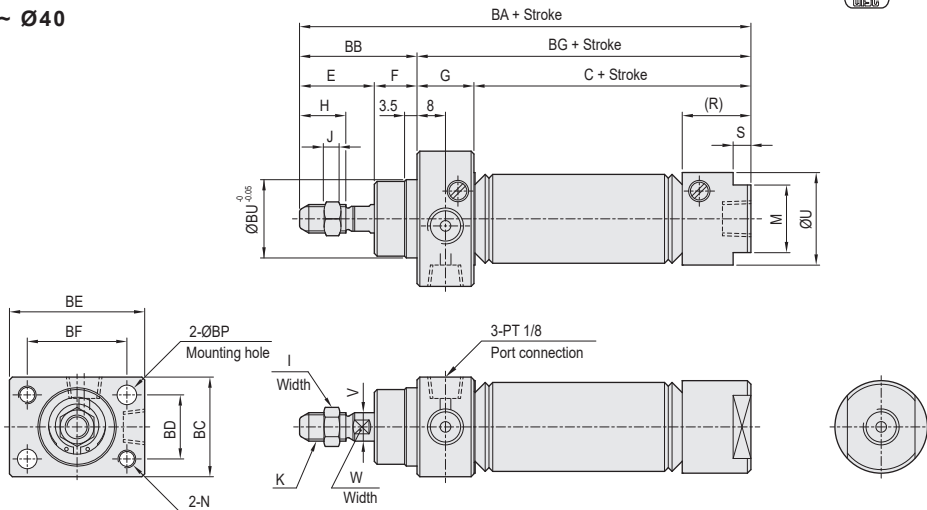
Unit: mm

Bore size	B	C	E	G	H	I	J	K	M	R	S	U	V	W	AA	AB	AD	AE	AF	AG	AH	AI	AN	AP
Ø20	22	57	21	26	15	13	6.3	M8x1.25P	19	19	5	25	Ø8	7	106	32	9	38	22	74	28	14	9	Ø6.6 hole, Thru-hole Ø11x6.5 dp
Ø25	24	57	24	28	18	13	6.3	M8x1.25P	22	18	5	30	Ø10	9	111	36	10	42	26	75	30	15	10	Ø6.6 hole, Thru-hole Ø11x6.5 dp
Ø32	28	70	29	34	23	17	8	M10x1.25P	22	18	6	35	Ø12	10	135	43	12	54	34	92	36	18	14	Ø9 hole, Thru-hole Ø14x8.5 dp
Ø40	34	69	29	42	21	22	11	M14x1.5P	32	21	6	45	Ø16	14	142	46	15	68	46	96	46	23	19	Ø11 hole, Thru-hole Ø17.5x10.8 dp

DBF2 series - Front mounting type



● Ø20 ~ Ø40



Unit: mm

Bore size	C	E	F	G	H	I	J	K	M	N	R	S	U	V	W	BA	BB	BC	BD	BE	BF	BG	BP	BU
Ø20	57	21	12	16	15	13	6.3	M8x1.25P	19	M5x0.8Px12dp	19	5	25	Ø8	7	106	33	28	18	38	28	73	5.5	22
Ø25	57	24	14	16	18	13	6.3	M8x1.25P	22	M5x0.8Px12dp	18	5	30	Ø10	9	111	38	30	20	42	34	73	5.5	24
Ø32	70	29	14	16	23	17	8	M10x1.25P	22	M6x1.0Px12dp	18	6	35	Ø12	10	129	43	36	24	54	42	86	6.5	28
Ø40	69	29	14	20	23	22	11	M14x1.5P	32	M8x1.25Px13dp	21	6	45	Ø16	14	132	43	46	28	68	52	89	9	34