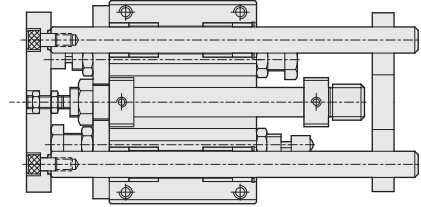
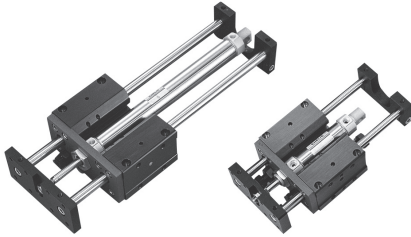


# GC series Guide Cylinder (Heavy load type)

## Product features

CHELIC

### Internal structure



### Specification

Unit : mm

Item	Bore size (mm)	GC-20	GC-25	GC-32	GC-40
Action		Double acting			
Fluid		Air			
Pressure range	kgf/cm <sup>2</sup> (kPa)	1.5 ~ 7 ( 150 ~ 700 )			
Ambient and fluid temperature	°C	0 ~ 60			
Piston speed	mm/s	50 ~ 1000			
Cushion	Shock absorbers	Option			
	Air cushion	Option			
Theoretical force	Push (Note)	3.1xP	4.9xP	8.0xP	12.5xP
	Pull (Note)	2.6xP	4.1xP	6.9xP	10.5xP
Lubrication		Lubrication free type			
Port size		PT 1/8			
Sensing device		With magnet			

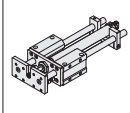
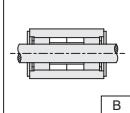
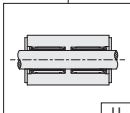
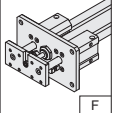
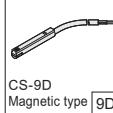
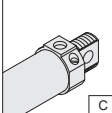
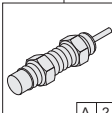
### Standard stroke

Unit : mm

Bore size	Standard stroke
GC□ - 20	75, 100, 125, 150, 200, 250, 300, 400, 500
GC□ - 25	75, 100, 125, 150, 200, 250, 300, 400, 500
GC□ - 32	75, 100, 125, 150, 200, 250, 300, 400, 500
GC□ - 40	75, 100, 125, 150, 200, 250, 300, 400, 500

◀ Note: "P" indicates air pressure kgf/cm<sup>2</sup>

### Code of order

<b>GC</b>	<b>B</b>	<b>32</b>	<b>200</b>	<b>F</b>	<b>9D</b>	<b>20S</b>	<b>2</b>	<b>A2</b>										
Model	Guide type	Bore size	Stroke	With flange	Sensor switch	Mounting bracket	Quantity of sensor/bracket	Cushion										
	 	20-Ø20 mm 25-Ø25 mm 32-Ø32 mm 40-Ø40 mm	Ø20 - 75 - 500 mm Ø25 - 75 - 500 mm Ø32 - 75 - 500 mm Ø40 - 75 - 500 mm			<table border="1"> <thead> <tr> <th>Model</th> <th>Cylinder (inner dia.)</th> </tr> </thead> <tbody> <tr> <td>20S</td> <td>Ø20</td> </tr> <tr> <td>25S</td> <td>Ø25</td> </tr> <tr> <td>32S</td> <td>Ø32</td> </tr> <tr> <td>40S</td> <td>Ø40</td> </tr> </tbody> </table>	Model	Cylinder (inner dia.)	20S	Ø20	25S	Ø25	32S	Ø32	40S	Ø40	1 : 1 PC 2 : 2 PCS	 
Model	Cylinder (inner dia.)																	
20S	Ø20																	
25S	Ø25																	
32S	Ø32																	
40S	Ø40																	
GC: Twin-guide cylinder unit	B: Bush guide U: Linear bearing guide			None: Standard F : With front flange plate	None: Without sensor switch			C : With air cushion A : Shock absorbers 2 : Shock absorber quantity										

⚠ Caution

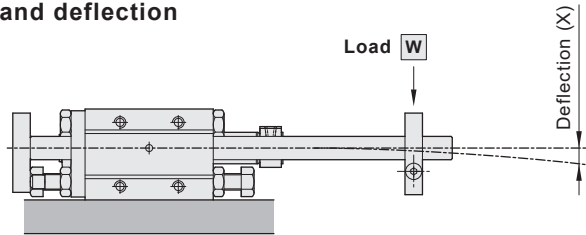
None: No air cushion ↩ 1 = 1 pc shock absorber assembly and size  
2 = 2 pcs shock absorber assembly and size

# GC series Guide Cylinder (Heavy load type)

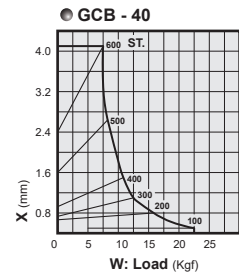
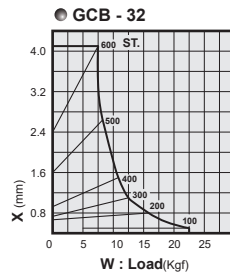
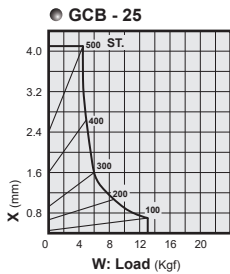
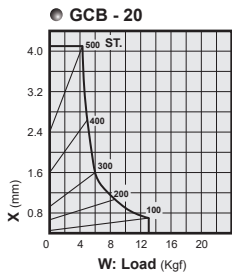
## Product features

CHELIC

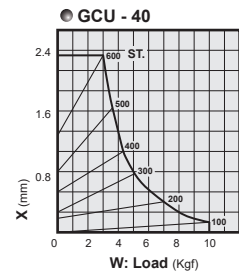
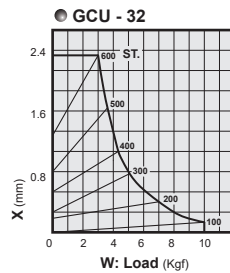
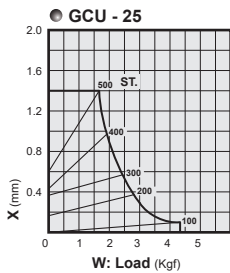
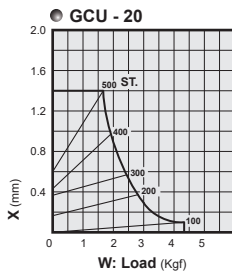
### Max. allowable load and deflection



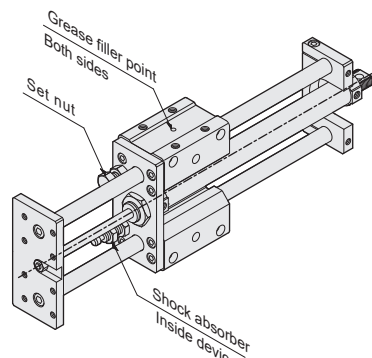
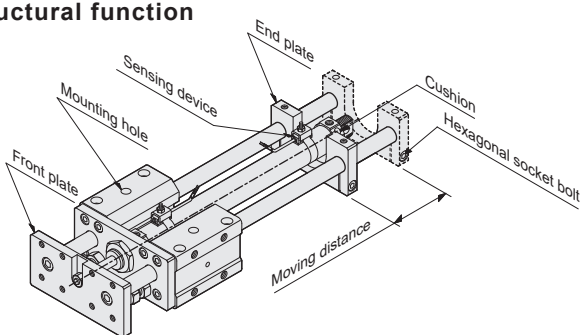
### Teflon guide



### Linear bearing guide



### Structural function



#### Pushing out stroke adjustment

Loosen hexagonal socket bolt at two sides, move rear slide unit to position of required stroke. (To be adjusted within the maximum stroke range). Then tighten the bolts.

#### Mounting hole

For precise locking plate changing or locking purpose.

#### Lubricant/ Grease filler point

Seals are installed at two sides of guide rod. ( Pressure-proof and leakage-proof device). Shaft is lubricated inside between bearing and guide rod.

#### Shock absorber device

Shock absorber- It is a device on two sides of body. (The function will not be affected while adjusting the slide block.)  
Pneumatic cushion- It is a device on the cylinder. (Work as piston reaching both maximum end. The function will be affected while adjusting the slide block).

TB(U)2

TA(R)

TSB(U)2

TXB(U)2

TMB(U)

GCB(U)

GHB(U)

TCR

TCF

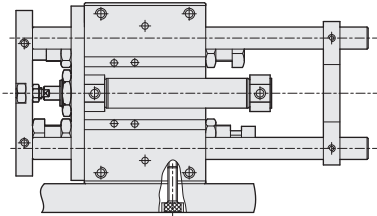
# GC series Guide Cylinder

## Mounted type

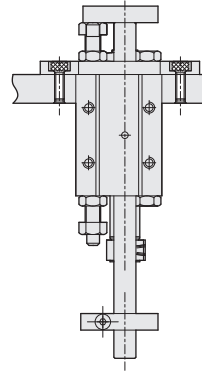
CHELIC

### Body mounted type (Reference)

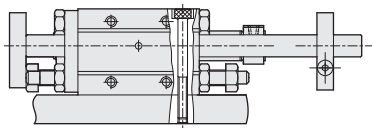
● Side mounting type



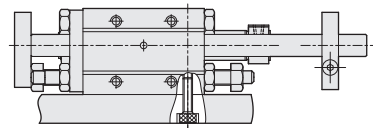
● Vertical mounting (with front flange plate) type



● Top mounting type

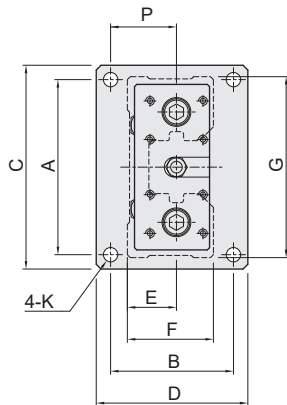


● Bottom mounting type

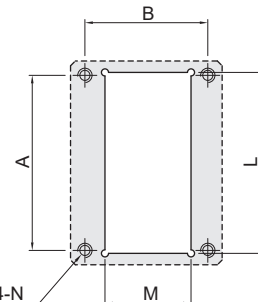
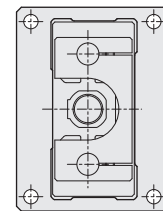
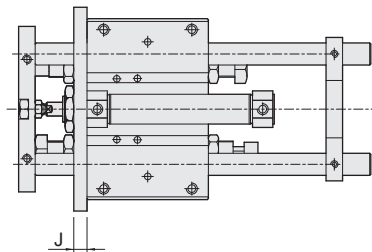


### Vertical mounted type (Reference)

● Front flange dimension



● Front flange plate (dimension reference)



Model	Size	A	B	C	D	E	F	G	J	K	L	M	N	P
GC - Ø20 (25)		128	88	144	104	35	60	124	10	9	130	72	M8	49
GC - Ø32 (40)		168	110	184	126	44.5	78	164	12	9	170	90	M8	60.5



