

PAO series Anti-slip Flat Type Vacuum Pad

Product features

CHELIC

Feature

- Uniqueness: Through the special pattern design inside the vacuum pad, a large lateral force can be tolerated during the conveying process.
- Convenience: The suction pad has a simple and small structure and can be easily replaced.
- Diversification: Various sizes, materials and brackets can be selected.



Vacuum pad material

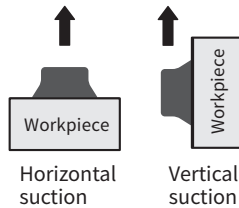
Mark	Vacuum pad material	Hardness (HS)	Ambient and fluid temperature	Color
N	NBR(Rubber)	A55/S	-26~120°C	Red

Vacuum control system

Theoretical suction is calculated from pad size and vacuum value, which is only a number for reference. Theoretical suction is a number under static status. Please reserve enough margin while adding workpieces and movement.

Before confirm the Qty and location of suction pad, please reserve enough margin.

● Suction type



● Calculation formula

$$W = \frac{P \times A}{-10}$$

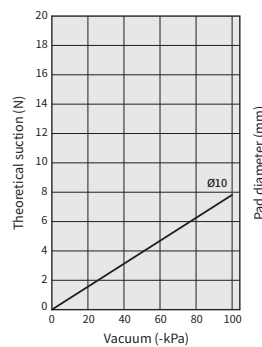
W: Force N

P : Vacuum pressure kPa

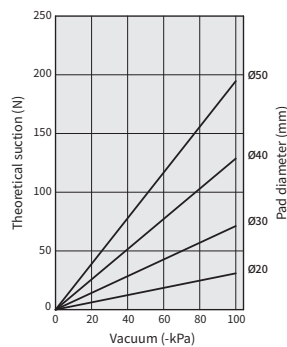
A : Pad area dimensions cm²

Theoretical suction

● Pad diameter: Ø10mm



● Pad diameter: Ø20~Ø50mm



PA

PB

PC

PAG

PAO

PAP

PAQ

PAW

PAL

PBL

PCL

PAR

PS

VP



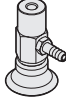


PAO series Anti-slip Flat Type Vacuum Pad

Code of order

CHELIC

Code of order PAO FS 10 x 4 N - R

1 2 3 4 5

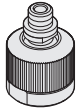
1	Bracket	Vertical entry	Vertical entry with fitting	Side entry	Vertical entry with spring	Side entry with spring
	Mark	F	K	T	FS	TS
	Image					

2	Mark	10	20	30	40	50
	Pad dia. (mm)	Ø10	Ø20	Ø30	Ø40	Ø50

3 ● Only available to FS, TS series

Mark	Stroke (mm)	Outer diameter (mm)	Mark	Stroke (mm)	Outer diameter (mm)
4	4	Ø10	6	6	Ø20, Ø30 Ø40, Ø50
10	10		15	15	

4	Mark	Vacuum pad material	Hardness (HS)	Ambient and fluid temperature	Color
	N	NBR(Rubber)	A60/S	-26~120°C	Red

5		With ball joint type
Mark	Outer diameter (mm)	
05	Ø10, Ø15	
20	Ø20, Ø30 Ø40, Ø50	

- Note: According to vacuum pad specification to py proper free holder.
- Note :Please refer to P3-2.96

PAO series selection table:

Pad type	1 Bracket	2 Pad dia.	3 Stroke	4 Vacuum pad material	5 Ball joint type
PAO	F	10	4	N	05
	• K		• 10		
	• T	30	6		20
	• FS	• 40			
	• TS	• 50			

Product weight

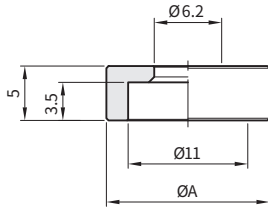
Item	PAO				
Model	10	20	30	40	50
Weight(g)	0.54	1.48	4.4	10.31	16.35

PAO series Anti-slip Flat Type Vacuum Pad

Dimensions-Non-slip vacuum pad PAO series

CHELIC

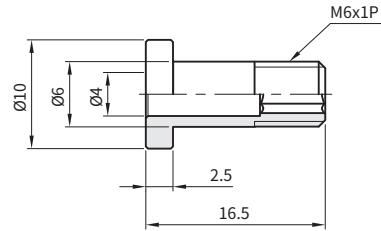
Adapter mounting dimensions



Unit: mm

Model	ØA	Applicable pad size
PAO 40	15	Ø40
PAO 50	20	Ø50

Adapter screw size

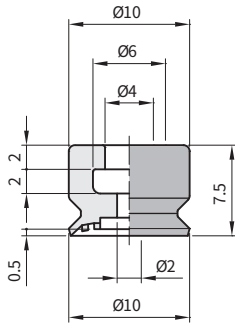


Unit: mm

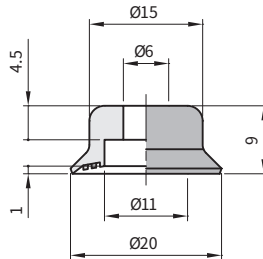
Model	Applicable pad size
PAO 40-M6	Ø40, Ø50

Vacuum pad size

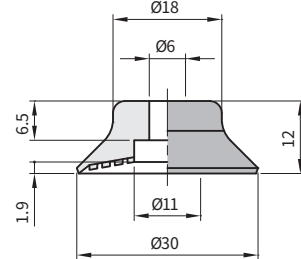
• PAO 10



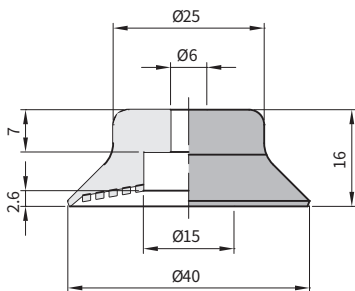
• PAO 20



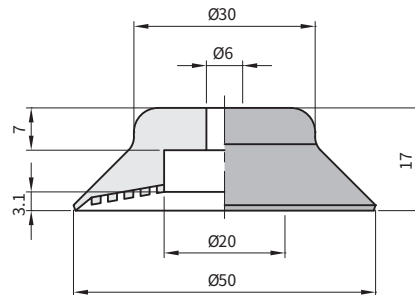
• PAO 30



• PAO 40



• PAO 50



PA

PB

PC

PAG

PAO

PAP

PAQ

PAW

PAL

PBL

PCL

PAR

PS

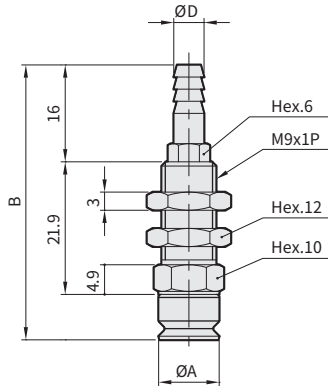
VP

PAO series Anti-slip Flat Type Vacuum Pad

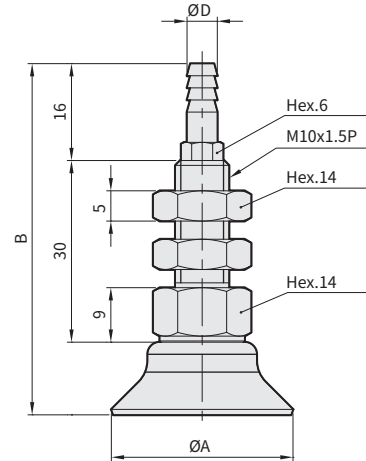
Dimensions-Anti-slip type PAOF series/ Vertical entry with fitting PAOK series

CHELIC

■ PAO **F** - 10



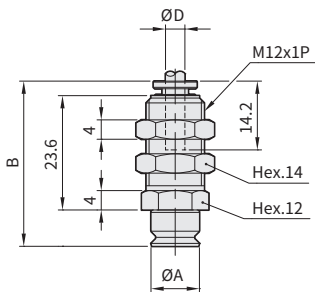
■ PAO **F** - 20, 30, 40, 50



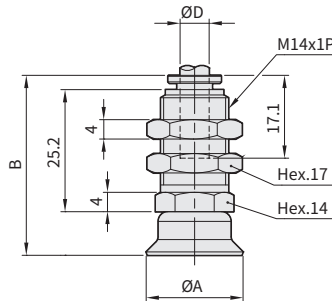
Unit: mm

Model	Size of PU tube ØD	Pad dia. ØA	Whole length B
PAO F - 10	6x4	10	45.4
PAO F - 20	6x4	20	55
PAO F - 30	6x4	30	58
PAO F - 40	6x4	40	62
PAO F - 50	6x4	50	63

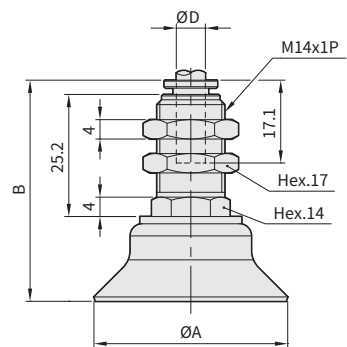
■ PAO **K** - 10



■ PAO **K** - 20, 30



■ PAO **K** - 40, 50



Unit: mm

Model	Size of PU tube ØD	Pad dia. ØA	Whole length B
PAO K - 10	4	10	34.1
PAO K - 20	6	20	37.2
PAO K - 30	6	30	40.2
PAO K - 40	6	40	45.7
PAO K - 50	6	50	46.7

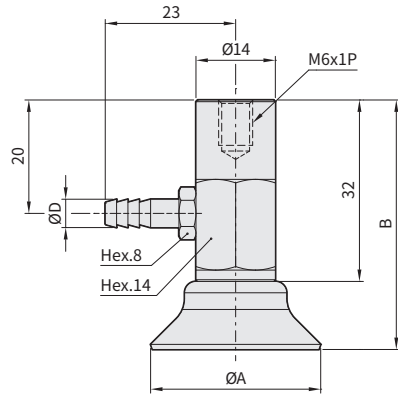
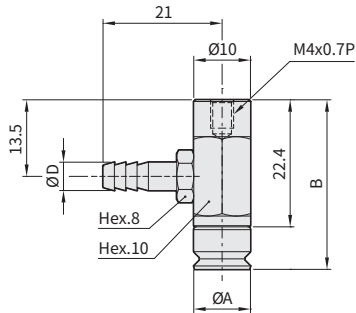
PAO series Anti-slip Flat Type Vacuum Pad

Dimensions-Anti-slip type PAOT series/ Vertical entry with spring

CHELIC

■ PAO **T** - 10

■ PAO **T** - 20, 30, 40, 50



Unit: mm

Model	Size of PU tube ØD	Pad dia. ØA	Whole length B
PAO T - 10	2.5	10	29.9
PAO T - 20	4	20	41
PAO T - 30	4	30	44
PAO T - 40	4	40	48
PAO T - 50	4	50	49

PA

PB

PC

PAG

PAO

PAP

PAQ

PAW

PAL

PBL

PCL

PAR

PS

VP

PAO series Anti-slip Flat Type Vacuum Pad

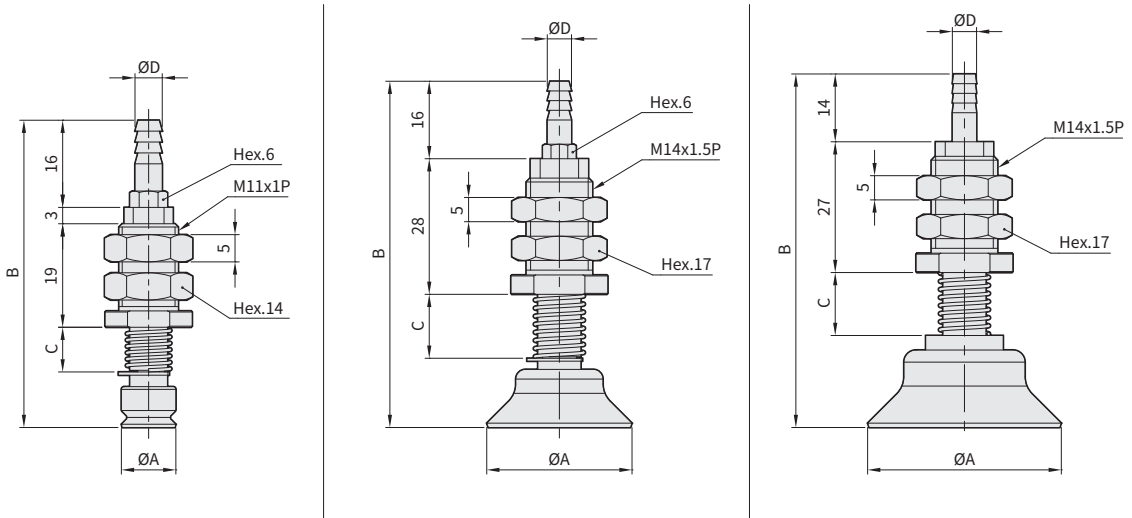
Dimensions-Anti-slip type PAOFS series/ Vertical entry with spring

CHELIC

■ PAO **FS** - 10 x **04**
 PAO **FS** - 10 x **10**

■ PAO **FS** - 20, 30 x **06**
 PAO **FS** - 20, 30 x **15**

■ PAO **FS** - 40, 50 x **06**
 PAO **FS** - 40, 50 x **15**



Unit: mm

Model	Size of PU tube ØD	Pad dia. ØA	Whole length B	C
PAO FS - 10 x 04	4	10	56.4	8
PAO FS - 10 x 10			68.4	20
PAO FS - 20 x 06	4	20	68.5	12
PAO FS - 20 x 15			85.5	30
PAO FS - 30 x 06	4	30	71.5	12
PAO FS - 30 x 15			88.5	30
PAO FS - 40 x 06	4	40	73	12
PAO FS - 40 x 15			90	30
PAO FS - 50 x 06	4	50	74	12
PAO FS - 50 x 15			91	30

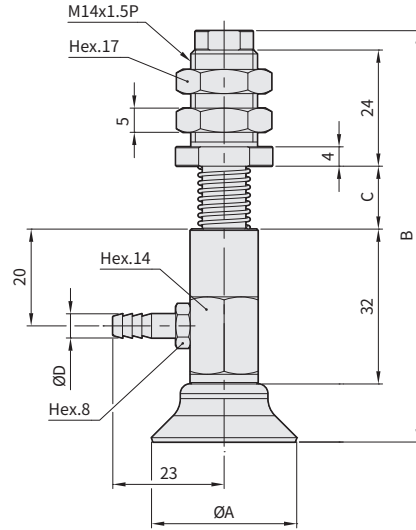
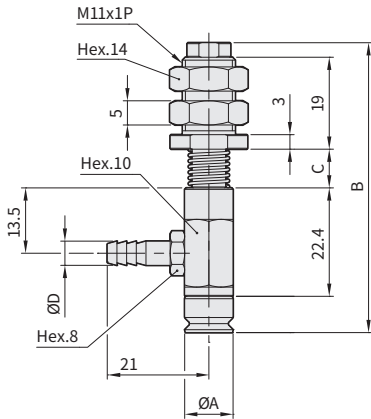
PAO series Anti-slip Flat Type Vacuum Pad

Dimensions-Anti-slip type PAOTS series/ Side entry with spring

CHELIC

■ PAO **TS** - 10 x **04**
 PAO **TS** - 10 x **10**

■ PAO **TS** - 20, 30, 40, 50 x **06**
 PAO **TS** - 20, 30, 40, 50 x **15**



Unit: mm

Model	Size of PU tube ØD	Pad dia. ØA	Whole length B	C
PAO TS - 10 x 04	4	10	59.9	8
PAO TS - 10 x 10			71.9	20
PAO TS - 20 x 06	4	20	82	12
PAO TS - 20 x 15			99	30
PAO TS - 30 x 06	4	30	85	12
PAO TS - 30 x 15			102	30
PAO TS - 40 x 06	4	40	89	12
PAO TS - 40 x 15			106	30
PAO TS - 50 x 06	4	50	90	12
PAO TS - 50 x 15			107	30

PA

PB

PC

PAG

PAO

PAP

PAQ

PAW

PAL

PBL

PCL

PAR

PS

VP