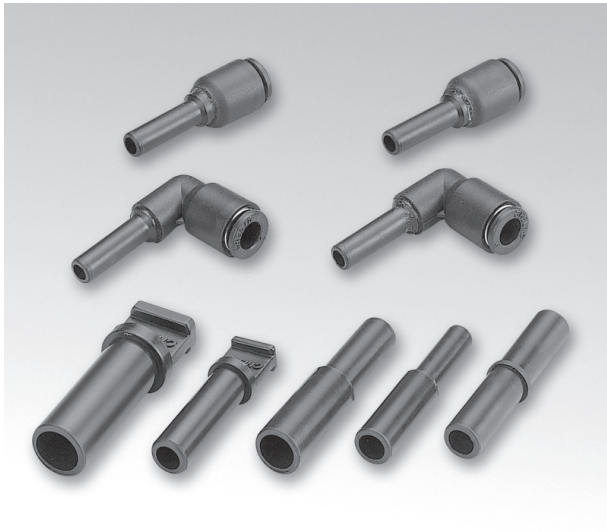


SP series Fitting

Plug, Nipple, Reducer nipple

CHELIC®



► Feature

1. Vertical, elbow and mutple connections, and different diameter in option.
2. Small size, light weight, and storage easily.

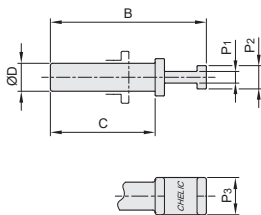
► SPG series Plug



Metric specification

Port size ØD	Model	B	C	P1	P2	P3	Weight (g)
Ø4	SPG 4	30.5	20.1	2.3	4.8	6	0.5
Ø6	SPG 6	33.5	22.5	2.5	5	8	0.9
Ø8	SPG 8	36.2	24.7	2.5	6	10	1.2
Ø10	SPG 10	39	26.1	3	8	10	2.2
Ø12	SPG 12	42.9	29	3	8	14	2.6

Inch specification



Port size ØD	Model	B	C	P1	P2	P3	Weight (g)
5/32"	SPG 5/32"	30.5	20.1	2.3	4.8	6	0.5
1/4"	SPG 1/4"	33.5	22.5	2.5	5	8	0.9
5/16"	SPG 5/16"	36.2	24.7	2.5	6	10	1.2
3/8"	SPG 3/8"	39	26	3	8	10	2.2
1/2"	SPG 1/2"	43	29	3	8	14	2.5

SQ □

MSQ □

SP □

SQ □ J

SQR □

SQ □ G

RQL

M □

Stainless
steel fitting

Brass
Fitting

Full copper
fitting

□ SC

QS □

QMC

QT

QH □

QV □

QST

PU Tube

SP series Fitting

SPP, SPF series

CHELIC®

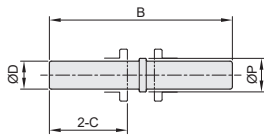
► SPP series Nipple



Metric specification

Port size ØD	Model	B	C	ØP	Weight (g)
Ø4	SPP 4	34.2	14.7	5.3	0.2
Ø6	SPP 6	39.3	16.5	7.2	0.9
Ø8	SPP 8	42.6	18	9.2	1.4
Ø10	SPP 10	45	19.4	11.3	2.0
Ø12	SPP 12	51.6	22.4	13.3	2.5

Inch specification



Port size ØD	Model	B	C	ØP	Weight (g)
5/32"	SPG 5/32"	34.2	14.7	5.3	0.2
5/16"	SPG 5/16"	42.6	18	9.2	1.4

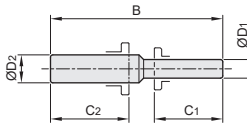
► SPF series Different diam nipple



Metric specification

Port size		Model	B	C1	C2	Weight (g)
ØD1	ØD2					
Ø4	Ø6	SPF 4 - 6	36.1	14.7	16.5	0.5
Ø6	Ø8	SPF 6 - 8	40.7	16.5	18	1.2
Ø8	Ø10	SPF 8 - 10	44.1	18	19.4	1.7
Ø10	Ø12	SPF 10 - 12	48.1	19.4	22.4	2.3

Inch specification



Port size		Model	B	C1	C2	Weight (g)
ØD1	ØD2					
5/32"	1/4"	SPF 5/32" - 1/4"	37	14.7	16.5	0.5
1/4"	5/16"	SPF 1/4" - 5/16"	41.5	16.5	18	1.2
5/16"	3/8"	SPF 5/16" - 3/8"	45	18	19.4	1.7
3/8"	1/2"	SPF 3/8" - 1/2"	49	19.4	22.4	2.3

SQ □ J series Fitting

SQHJ, SQLJ series

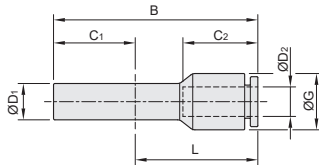
CHELIC_®

► SQHJ series Plug-in reducer

Metric specification



Port size		Model	B	C1	C2	ØG	L	Effective orifice mm ²	Weight (g)
ØD1	ØD2								
Ø6	Ø4	SQHJ 6 - 4	38.1	17	14.5	10.5	21.1	5.3	3
Ø8	Ø4	SQHJ 8 - 4	41.1	18	16.5	12.4	23.1	5.3	4
Ø8	Ø6	SQHJ 8 - 6	40.8	18	16.5	12.4	22.8	9	4
Ø10	Ø6	SQHJ 10 - 6	46.8	20	16.5	14.3	26.8	9	4.5
Ø10	Ø8	SQHJ 10 - 8	47	20	17.8	14.3	27	20	6
Ø12	Ø8	SQHJ 12 - 8	54	23.5	17.8	17.8	30.5	20	7
Ø12	Ø10	SQHJ 12 - 10	54	23.5	19.2	17.8	30.5	35	8

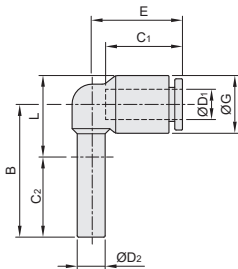


► SQLJ series Plug-in elbow

Metric specification



Port size		Model	B	C1	C2	E	ØG	L	Effective orifice mm ²	Weight (g)
ØD1	ØD2									
Ø4	Ø4	SQLJ 4 - 4	25.8	14.5	15.3	17.5	10.5	15.5	2	2.5
Ø4	Ø6	SQLJ 6 - 4	28.8	14.5	17.2	19.8	12.4	17.5	4.6	3.5
Ø6	Ø6	SQLJ 6 - 6	28.8	16.5	17.2	19.6	12.4	17.5	7.5	4
Ø6	Ø8	SQLJ 8 - 6	32.1	16.5	18.2	22.6	14.3	21.6	10.4	5
Ø8	Ø8	SQLJ 8 - 8	32.6	18.5	18.2	23.1	14.3	21.6	16.5	5.5
Ø8	Ø10	SQLJ 10 - 8	33.8	17.8	20.4	24.2	17.8	22.3	17.4	12
Ø10	Ø10	SQLJ 10 - 10	33.8	19.2	20.4	24.2	17.8	22.6	30	13
Ø10	Ø12	SQLJ 12 - 10	40.3	19.7	24.7	28.3	21.2	26.3	28	14
Ø12	Ø12	SQLJ 12 - 12	40.3	21.9	24.7	28.3	21.2	26.3	42.5	14.5



SQ □

MSQ □

SP □

SQ □ J

SQR □

SQ □ G

RQL

M □

Stainless steel fitting

Brass Fitting

Full copper fitting

□ SC

QS □

QMC

QT

QH □

QV □

QST

PU Tube