

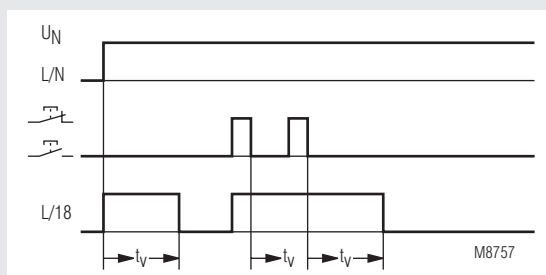
## MINITIMER Fan Control Timer IK 8810/005

Translation  
of the original instructions

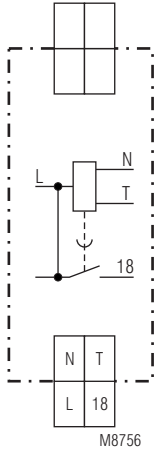


- According to EN 60669
- Setting range 0.5 ... 10 min
- After the light the fan switched on
- Switch for continuous light of the exhauster on unit
- Contact: 16 A
- Width 17.5 mm

### Function Diagram



### Circuit Diagram



IK 8810.41

### Approvals and Markings



### Application

Control of fans

### Function

The fan starts approx. 1 min. after the light is switched on. When the light is switched off the fan will continue to run for the adjusted delay time.

### Indication

LED: On when output relay activated

### Notes

Unit and push button have to be connected to the same phase (see connection diagram) The output contact is not volt free.

### Technical Data

#### Time Circuit

**Time range:** 0.5 ... 10 min  
**Repeat accuracy:** < 1 % of setting value

#### Input

**Nominal voltage  $U_N$ :** AC 230 V  
**Voltage range:** 0.8 ... 1.1  $U_N$   
**Nominal consumption**  
apparent power: 4 VA  
effective power: 1 W  
**Nominal frequency:** 50 / 60 Hz

#### Output

**Contacts:** 1 NO contact, delay  
**Contact opening gap:** < 3 mm  
**Thermal current  $I_{th}$ :** 16 A  
**Switching capacity at fan load:** 200 VA  
**Short circuit strength max. fuse rating:** 16 A gG / gL IEC/EN 60947-5-1  
**Mechanical life:** > 10<sup>6</sup> switching cycles

## Technical Data

### General Data

**Nominal operating mode:** Impulse operation  
**Temperature range:** - 20 ... + 60°C

### Clearance and creepage distances

Rated impulse voltage / pollution degree: 4 kV / 2 IEC 60664-1

### EMC

Electrostatic discharge (ESD): 8 kV (air) IEC/EN 61000-4-2  
 HF-irradiation: 10 V / m IEC/EN 61000-4-3  
 Fast transients: 2 kV IEC/EN 61000-4-4

### Surge voltages between

wires for power supply: 2 kV IEC/EN 61000-4-5  
 between wire and ground: 4 kV IEC/EN 61000-4-5  
 Interference suppression: Limit value class B EN 55011

### Degree of protection

Housing: IP 40 IEC/EN 60529  
 Terminals: IP 20 IEC/EN 60529

### Housing:

Thermoplast with V0-behaviour according to UL subj. 94

### Vibration resistance

Amplitude 0.35 mm frequency 10 ... 55 Hz IEC/EN 60068-2-6  
 20 / 060 / 04 IEC/EN 60068-1

### Climate resistance:

### Terminal designation:

### Wire connection:

EN 50005  
 2 x 2.5 mm<sup>2</sup> solid or  
 2 x 1.5 mm<sup>2</sup> stranded wire with sleeve  
 DIN 46228-1/-2/-3/-4

### Wire fixing:

Flat terminals with self-lifting clamping piece IEC/EN 60999-1

### Mounting:

DIN rail IEC/EN 60715

### Weight:

75 g

## Dimensions

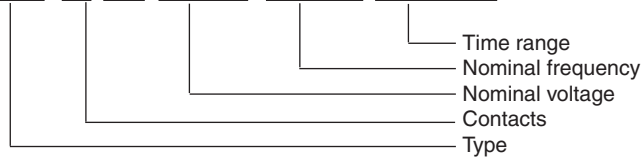
**Width x Height x Depth:** 17.5 x 89 x 58 mm

## Standard Type

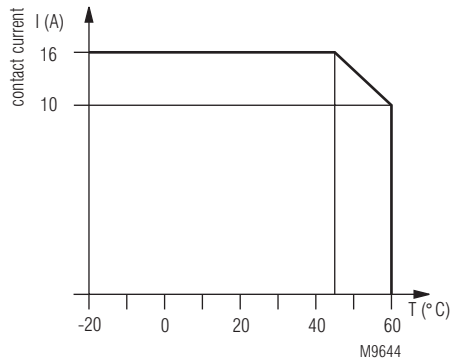
IK 8810.41/005 AC 230 V 50 / 60 Hz 0.5 ... 10 min  
 Article number: 0057068 stock item  
 • Output: 1 NO contact, delay  
 • Nominal voltage  $U_N$ : AC 230 V  
 • Timer range: 0.5 ... 10 min  
 • Width: 17.5 mm

## Ordering Example

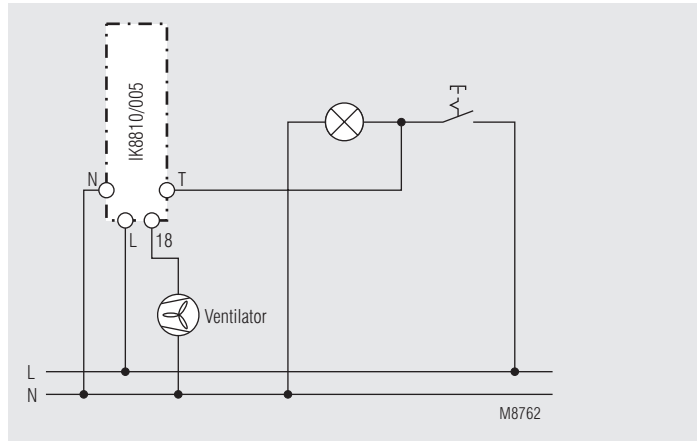
IK 8810 .41 /005 AC 230 V 50 / 60 Hz 0.5 ... 10 min



## Characteristics



## Application Example



circuit L on push button