

Unità di potenza pneumo-idraulica – versione UPH

Pneumo-hydraulic power unit – UPH version

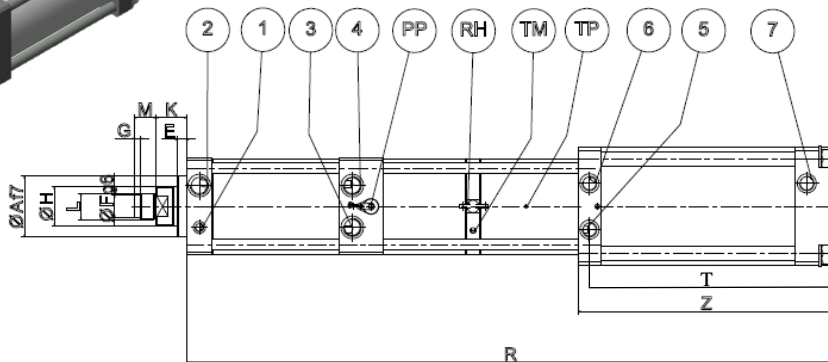
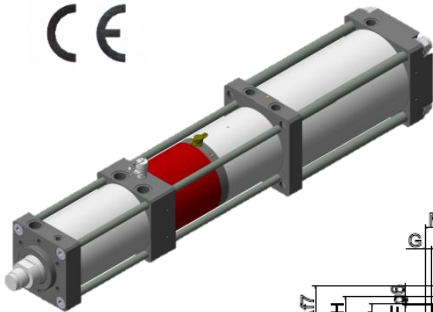


Versione in linea
con moltiplicatore maggiorato
4 potenze disponibili da 17 a 142 kN
pressione aria 9 bar
corsa totale 50-100-200 mm
corsa lavoro 26 – 60 mm
corse speciali a richiesta

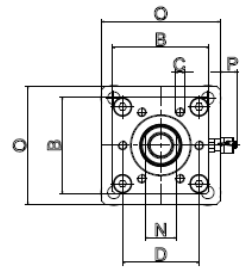
In line version with bigger multiplier
4 powers available from 17 to 142 kN
9 bar air pressure
50-100-200 mm total stroke
26 – 60 mm work stroke
special strokes under demand

DATI TECNICI E DIMENSIONI • SPECIFICATIONS AND DIMENSIONS

| versione version | sforzo force max kN | corse strokes mm | ① | ② | ③ | ④ | ⑤ | ⑥ | ⑦ |
|---------------------|------------------------------|-----------------------------|-----|-----|-----|-----|-----|-----|-----|
| UPH.20 | 17 | 050-26 100-26 200-26 | 1/8 | 1/4 | 1/4 | 1/4 | 1/4 | 1/4 | 1/4 |
| | | 050-45 100-45 200-45 | | | | | 3/8 | 3/8 | 3/8 |
| UPH.40 | 35,5 | tutti modelli all models | 1/8 | 3/8 | 3/8 | 3/8 | 3/8 | 3/8 | 3/8 |
| UPH.80 | 72 | 050-26 100-26 200-26 | 1/8 | 1/2 | 1/2 | 1/2 | 3/8 | 3/8 | 3/8 |
| | | 100-60 200-60 | | | | | 1/2 | 1/2 | 1/2 |
| UPH.150 | 142 | tutti modelli all models | 1/8 | 1/2 | 1/2 | 1/2 | 1/2 | 1/2 | 1/2 |



LEGENDA PAG. 1



DATI TECNICI E DIMENSIONI • SPECIFICATIONS AND DIMENSIONS

| versione version | pressione max aria max air pressure bar | potenza power kN | corsa totale total stroke mm | corsa lavoro work stroke mm | sforzo lavoro work effort kN 9 bar | sforzo avvicinam. approach. effort daN – 6 bar | sforzo ritorno return effort daN – 6 bar | Ø A | B | C | D | E | Ø F | G | Ø H | K | L | M | N | O | P | R | T | Z |
|---------------------|---|------------------------|--|---|---|--|--|--------|-----|---------|-----|----|--------|---|--------|------|---------|----|----|-----|-----|--------------------|-------|-----|
| UPH | 9 | 20 | 050 100 200 | 26 | 17 | 182 | 168 | 40 | 71 | 6M8X12 | 54 | 10 | - | - | 20 | 26 | M16X1,5 | 15 | 16 | 87 | 30 | 520 632 866 | 221 | 232 |
| | | | 050 100 200 | 45 | 17 | 182 | 168 | 40 | 71 | | 54 | 10 | - | - | 20 | 26 | | 15 | 16 | 87 | 30 | 601 713 947 | 302 | 313 |
| UPH | 9 | 40 | 050 100 200 | 26 | 35,5 | 250 | 220 | 50 | 87 | 6M8X15 | 64 | 10 | 18 | 7 | 30 | 28,5 | M22X2 | 20 | 24 | 111 | 26 | 576 688 925 | 237 | 250 |
| | | | 050 100 200 | 45 | 35,5 | 250 | 220 | 50 | 87 | | 64 | 10 | 18 | 7 | 30 | 28,5 | | 20 | 24 | 136 | 14 | 604 716 953 | 265 | 278 |
| UPH | 9 | 80 | 050 100 200 | 26 | 68,5 | 450 | 375 | 70 | 111 | 6M10X16 | 88 | 10 | 26 | 7 | 45 | 35 | M30X2 | 25 | 36 | 136 | 26 | 622 746 996 | 282 | 295 |
| | | | 100 200 | 60 | 72 | 450 | 375 | 70 | 111 | | 88 | 10 | 26 | 7 | 45 | 35 | | 25 | 36 | 170 | 8,5 | 876 1126 | 407,5 | 425 |
| UPH | 9 | 150 | 050 100 200 | 26 | 142 | 700 | 618 | 75 | 136 | 6M16X25 | 100 | 15 | 26 | 7 | 50 | 36 | M30X2 | 25 | 41 | 170 | 21 | 736 865 1320 | 407,5 | 425 |
| | | | 050 100 200 | 38 | 135 | 700 | 618 | 75 | 136 | | 100 | 15 | 26 | 7 | 50 | 36 | | 25 | 41 | 212 | - | 354,5 | 372 | |

Unità di potenza pneumo-idraulica – versione UPH

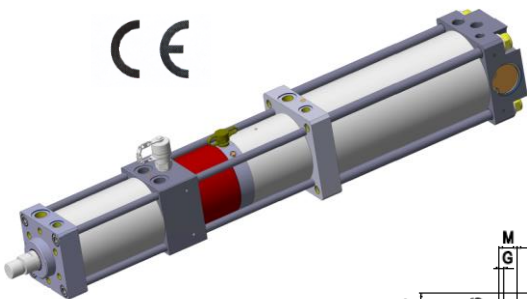
Pneumo-hydraulic power unit – UPH version



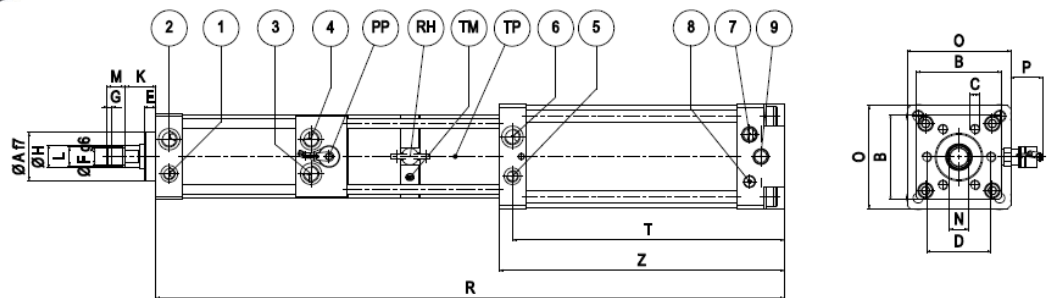
VERSIONE “NG” “NG”VERSION

DATI TECNICI E DIMENSIONI • SPECIFICATIONS AND DIMENSIONS

| versione version | sforzo force max kN | corse strokes mm | ① | ② | ③ | ④ | ⑤ | ⑥ | ⑦ | ⑧ | ⑨ |
|---------------------|------------------------------|-----------------------------|-----|-----|-----|-----|-----|-----|-----|-----|-----|
| UPH.20 NG | 17 | 050-26 100-26 200-26 | 1/8 | 1/4 | 1/4 | 1/4 | 1/4 | 1/4 | 1/4 | 1/8 | 1/4 |
| | | 050-45 100-45 200-45 | | | | | 3/8 | 3/8 | 3/8 | | |
| UPH.40 NG | 35,5 | tutti modelli all models | 1/8 | 3/8 | 3/8 | 3/8 | 3/8 | 3/8 | 3/8 | 1/8 | 1/2 |
| UPH.80 NG | 72 | 050-26 100-26 200-26 | 1/8 | 1/2 | 1/2 | 1/2 | 3/8 | 3/8 | 3/8 | 1/8 | 3/4 |
| | | 100-60 200-60 | | | | | 1/2 | 1/2 | 1/2 | | |



LEGGENDA PAG. 1



DATI TECNICI E DIMENSIONI • SPECIFICATIONS AND DIMENSIONS

| versione version | pressione max air pressure bar | potenza power kN | corsa totale total stroke mm | corsa lavoro work stroke mm | sforzo lavoro work effort kN 9 bar | sforzo avvicinam. approach. effort daN – 6 bar | sforzo ritorno return effort daN – 6 bar | Ø A | B | C | D | E | Ø F | G | Ø H | K | L | M | N | O | P | R | T | Z |
|---------------------|---|------------------------|--|---|---|--|--|--------|-----|---------|----|----|--------|---|--------|------|---------|----|----|-----|---------|--------------------|-------|-----|
| UPH | 9 | 20 | 050 100 200 | 26 | 17 | 182 | 168 | 40 | 71 | 6M8X12 | 54 | 10 | - | - | 20 | 26 | M16X1,5 | 15 | 16 | 87 | 30 | 529 641 875 | 221 | 232 |
| | | | 050 100 200 | 45 | 17 | 182 | 168 | 40 | 71 | | 54 | 10 | - | - | 20 | 26 | | 15 | 16 | 87 | 30 | 608 720 954 | 309 | 320 |
| UPH | 9 | 40 | 050 100 200 | 26 | 35,5 | 250 | 220 | 50 | 87 | 6M8X15 | 64 | 10 | 18 | 7 | 30 | 28,5 | M22X2 | 20 | 24 | 111 | 26 | 585 697 934 | 237 | 250 |
| | | | 050 100 200 | 45 | 35,5 | 250 | 220 | 50 | 87 | | 64 | 10 | 18 | 7 | 30 | 28,5 | | 20 | 24 | 136 | 14 | 613 725 962 | 265 | 278 |
| UPH | 9 | 80 | 050 100 200 | 26 | 68,5 | 450 | 375 | 70 | 111 | 6M10X16 | 88 | 10 | 26 | 7 | 45 | 35 | M30X2 | 25 | 36 | 136 | 26 | 631 755 1005 | 282 | 295 |
| | | | 100 200 | 60 | 72 | 450 | 375 | 70 | 111 | | 88 | 10 | 26 | 7 | 45 | 35 | | 25 | 36 | 170 | 8, 5 | 885 1135 | 407,5 | 425 |