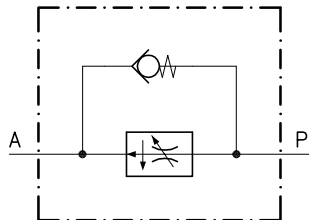


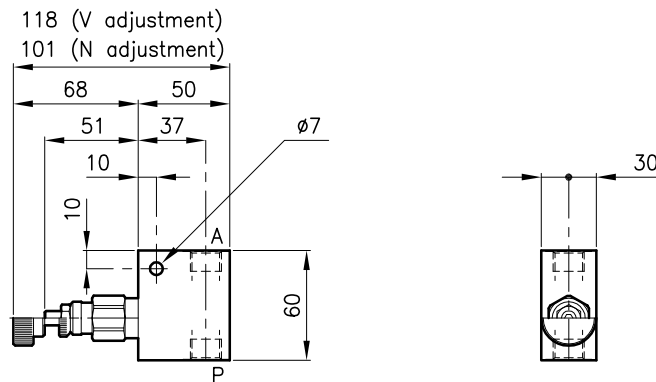
**Technical features**

The main valve are used as pressure compensated flow control and the they keep flow adjusted uniform independently from the pressure.  
The annexed by-pass valve allows the reverse free-flow.



Valves	(For features see catalogue 06.050)	RDC 20
	(For features see catalogue 05.005)	CB 20
Flow setting range 10% (l/min.)	type U	0.6 - 2.2
	type D	1.5 - 4.5
	type T	3.2 - 9.5
	type Q	6 - 18
Max. pressure	(bar)	315
Fluid viscosity range	(cSt)	2.8 - 380
Fluid temperature range	(°C)	-20 +80
Mass	(kg)	0.400
Hydraulic fluid; mineral oil HM and HV		ISO 6074
Recommended filtration; 19/15 ISO 4466 (25 μ absolutes)		
Standard seals in Polyurethane and Buna N		

**Dimensions**



**Ordering informations**

**RDC 20/D-N-CSL 10-B06**

Valve type

Flow setting range

**U** = 0.6 - 2.2 l/min

**D** = 1.5 - 4.5 l/min

**T** = 3.2 - 9.5 l/min

**Q** = 6 - 18 l/min

Adjustment type

**N** = Standard adjustment

**V** = Handknob adjustment

Version

Standard ports

**B06** = G 3/8 ISO 228

Codes:

RDC 20/U-N-CSL 10-B06 23 011 129

RDC 20/D-N-CSL 10-B06 23 011 130

RDC 20/T-N-CSL 10-B06 23 011 131

RDC 20/Q-N-CSL 10-B06 23 011 132

RDC 20/U-V-CSL 10-B06 23 011 133

RDC 20/D-V-CSL 10-B06 23 011 134

RDC 20/T-V-CSL 10-B06 23 011 135

RDC 20/Q-V-CSL 10-B06 23 011 136

Only body code:

Body type 20-CSL 10-B06 28 144 116