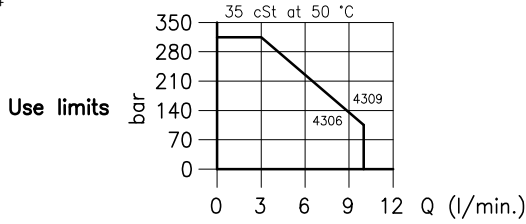
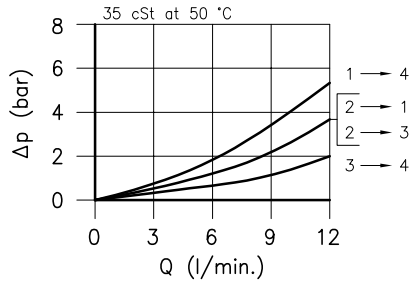
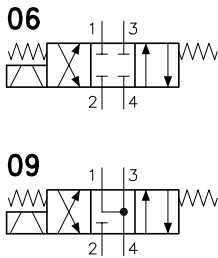
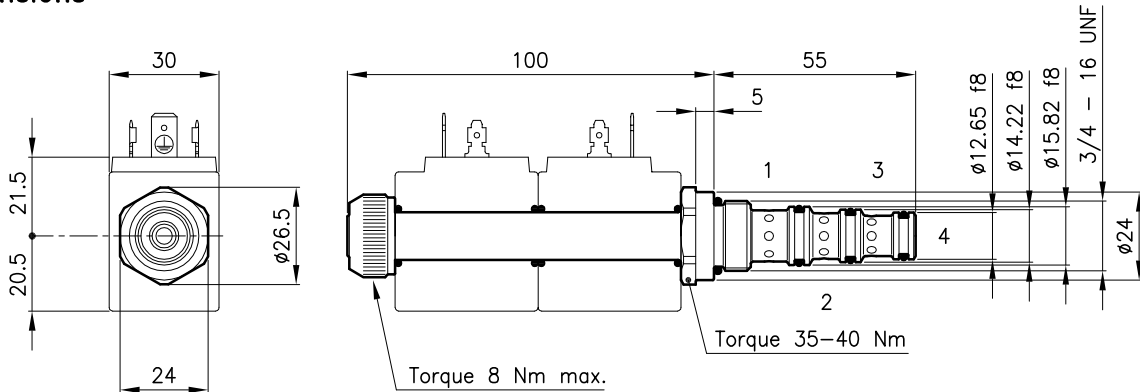


Technical features



Cavity (For dimensions see catalogue 17.002)	S 28/4
Max. flow (l/min.)	10
Max. pressure way 1-2-3 (bar)	315
Max. pressure way 4 (bar)	50
Max. leakage (cm ³ /min.)	20
Response time (ms) It change in function of circuit, pressure, flow and fluid viscosity.	20 - 40 (Mean value)
Fluid viscosity range (cSt)	2.8 - 380
Fluid temperature range (°C)	-20 +80
Mass (kg)	0.180
Hydraulic fluid; mineral oil HM and HV	ISO 6074
Recommended filtration; 19/15 ISO 4466 (25 μ absolutes)	
Standard seals in Polyurethane and Buna N	

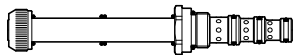
Dimensions



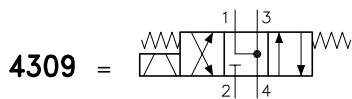
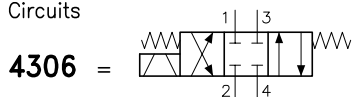
Ordering informations

ETD 28/4306

ETD 28/43.. = Valve type
Centre closed



Circuits



Codes:

ETD 28/4306	25 011 131
ETD 28/4309	25 011 137
External seals kit	90 620 119

ETD 28/43.. valves can be assembled on standard bodies 28-C4 series; for dimensions see catalogue 16.011

On the ETD 28 valves must be assembled the Coils B28 series; for dimensions, features and codes see catalogue 09.902.