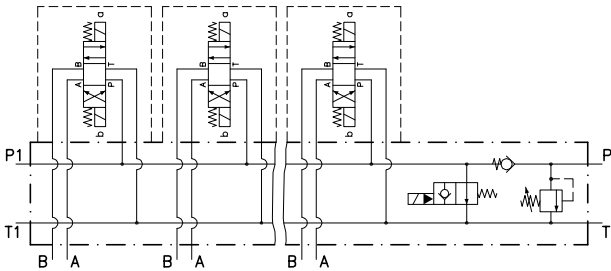


Technical features



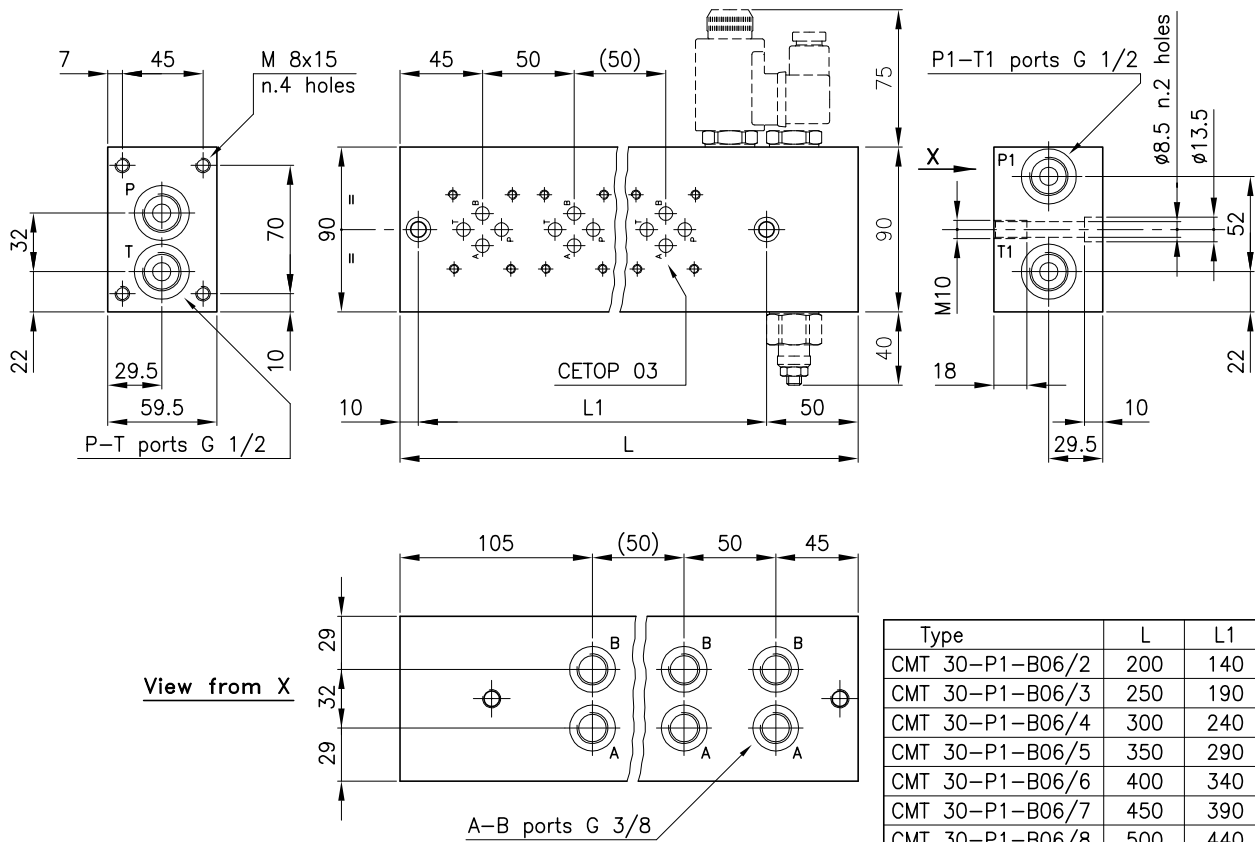
These are basic modular plates paralleling connected for solenoid valve provided with a connection surface CETOP R35 H-4.2-4-03.

Standard version in alluminium (max. pressure 315 bar). On request available also in steel.

The plates CMT 30-P1 show n° 3 cavities S 30/2 and are arranged for assembling check valve, unloading solenoid valve and pressure relief valve of the Series 30.

The cartridge valves Series 30 are to be ordered separately.

Dimensions



Type	L	L1
CMT 30-P1-B06/2	200	140
CMT 30-P1-B06/3	250	190
CMT 30-P1-B06/4	300	240
CMT 30-P1-B06/5	350	290
CMT 30-P1-B06/6	400	340
CMT 30-P1-B06/7	450	390
CMT 30-P1-B06/8	500	440

Ordering informations

CMT 30-P1-B06/3

Valves type _____

Parallel connection _____
(Pre-arrangement for pressure relief valve, unloading solenoid valve and check valve)

A e B ports _____
B06 = G 3/8 _____

Sections number _____

Codes:

CMT 30-P1-B06/2	38 144 157
CMT 30-P1-B06/3	38 144 158
CMT 30-P1-B06/4	38 144 159
CMT 30-P1-B06/5	38 144 160
CMT 30-P1-B06/6	38 144 161
CMT 30-P1-B06/7	38 144 162
CMT 30-P1-B06/8	38 144 163