

FP 150

DIAPHRAGM LIQUID PUMP



FP 150



FP 150



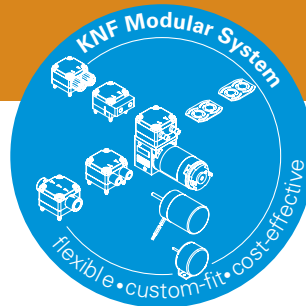
FP 150

ADVANTAGES

- Low pulsation
- Excellent linearity
- Self-priming and can run dry
- Gentle conveying of sensitive media
- Long lifetime, no maintenance
- Able to transfer aggressive media
- IP 65

POSSIBLE AREAS OF USE

- Inkjet printing
- Medical technology
- Laboratory technology
- Fuel cells
- Semiconductor industry
- And many more



Please visit our website
www.knf.com
 to get more information.

PERFORMANCE DATA

| Series model | FP 150 | |
|--------------------------------------|-------------|-------------|
| Material options | KP | KT |
| Pump head | PP | PP |
| Diaphragm | PTFE coated | PTFE coated |
| Valves / O-rings | EPDM | FFKM / FKM |
| Flow rate (l/min) | 1.5 | 1.3 |
| Suction height (mH ₂ O) | 2.7 | 2.5 |
| Pressure head (mH ₂ O) | 20 | 20 |
| Permissible media temperature (°C) | 5 - 80 | 5 - 80 |
| Permissible ambient temperature (°C) | 5 - 40 | 5 - 40 |
| Protection factor | IP 65 | IP 65 |
| Weight (kg) | 0.8 | 0.8 |

ELECTRICAL DATA

| | | |
|--------------------------------|---------------------|---------------------|
| Voltage (V) | 24 | 24 |
| Motor | DCB-4 | DCB-4 |
| Power (W) start at 5°C ambient | 31 | 31 |
| I (A) start at 5°C ambient | 1.3 | 1.3 |
| I (A) start at 25°C ambient | 1.1 | 1.1 |
| Wires | AWG22 | AWG22 |
| Input signal | Vctrl / PWM inverse | Vctrl / PWM inverse |
| Input signal range Vctrl | 0...5 V | 0...5 V |
| Input signal range PWM inverse | 100%...0% | 100%...0% |

VARIOUS

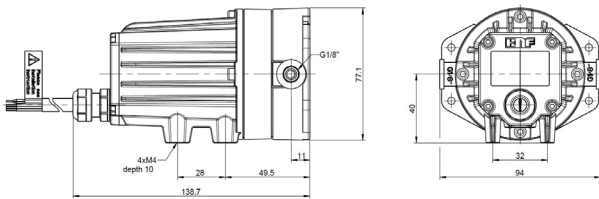
| | | |
|-----------------------------------|-----------|-----------|
| Dimensions LxWxH (mm) | 139x94x77 | 139x94x77 |
| Hydraulic connections | G 1/8" | G 1/8" |
| Hose diameter recommendation (mm) | ID 8 | ID 8 |

FP 150 KPDCB-4

PERFORMANCE DATA

| Series model | Flow rate at atm. pressure (l/min) | Max. suction height (mH ₂ O) | Max. pressure head (mH ₂ O) |
|----------------|------------------------------------|---|--|
| FP 150 KPDCB-4 | 1.5 | 2.7 | 20 |

FP 150 KPDCB-4



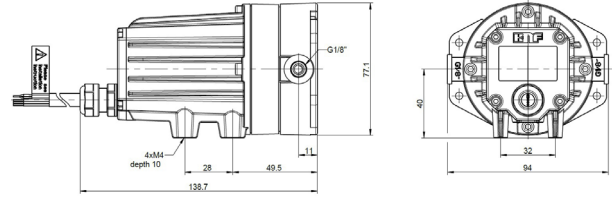
Dimensions in mm

FP 150 KTDCB-4

PERFORMANCE DATA

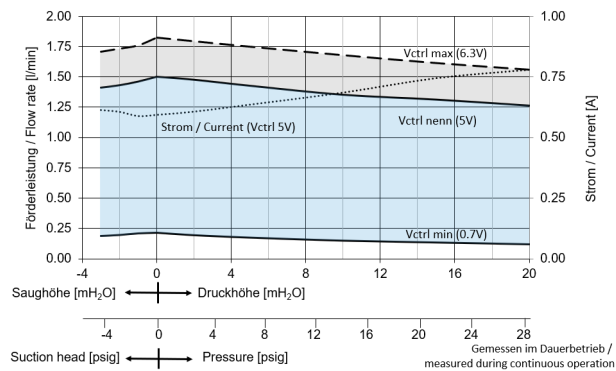
| Series model | Flow rate at atm. pressure (l/min) | Max. suction height (mH ₂ O) | Max. pressure head (mH ₂ O) |
|----------------|------------------------------------|---|--|
| FP 150 KTDCB-4 | 1.3 | 2.5 | 20 |

FP 150 KTDCB-4

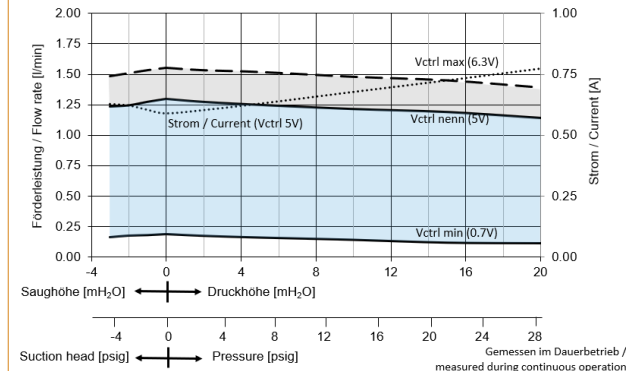


Dimensions in mm

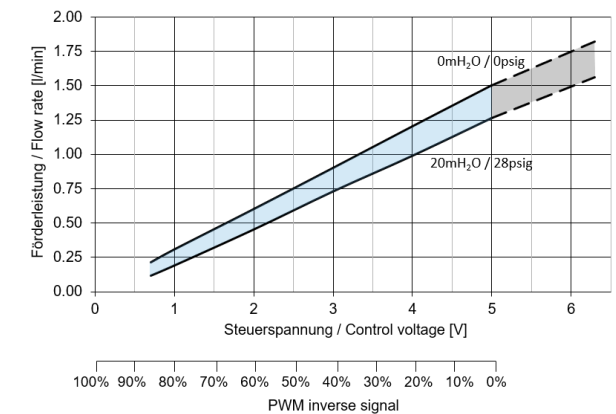
FP 150 KPDCB-4 FLOW RATE



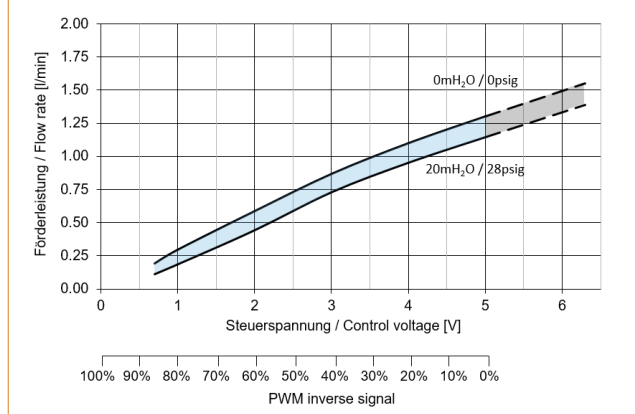
FP 150 KTDCB-4 FLOW RATE

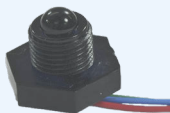


FP 150 KPDCB-4 CONTROL VOLTAGE



FP 150 KTDCB-4 CONTROL VOLTAGE



| OPTIONS | | |
|----------------|---|---|
| Description | Illustration | Details |
| Leakage sensor |  | The liquid level sensor provides a digital output that denotes the presence of liquid in the motor housing. |



NSF National Sanitary Foundation

This certification will confirm that all of the pumps with the code .51 are certified for the use with foods/consumables.

| ACCESSORIES | | |
|------------------|--|--|
| Description | Illustration | Details |
| Pulsation damper |  | This versatile pulsation damper reduces hydraulic pressure pulsations and vibrations in hoses and pipes. It helps to remove pulsation which prevents the system from functioning correctly. It also protects instrumentation connected after the pump. |
| Mounting plate |  | Enabling additional mounting options. Screws included in the set. |
| Mounting clamp |  | Additional fixing possibility by means of a pipe clamp on the pump. |

The performance values for the series models shown on this data sheet were determined under test conditions. The actual performance values may differ and depend in particular on the usage conditions and therefore on the specific application, on the parameters of the components involved in the user's system and on any technical modifications carried out which deviate from the standard configuration or the as delivered condition.

If individual designs have been created for specific customers on the basis of series models, other technical performance data may apply.

Before operation begins, the relevant operating instructions and/or assembly or installation instructions should be read and the safety information contained in these instructions should be noted.

KNF reserves the right to make changes to the product and the associated documentation without prior notice to the customer



www.knf.com