

NFB 100

DIAPHRAGM LIQUID PUMP



NFB 100 KPDCB-4

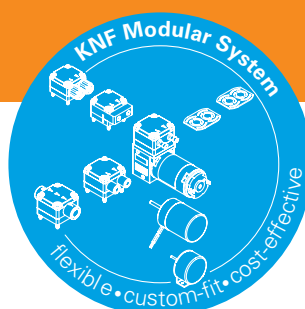
ADVANTAGES

- Self priming and excellent for pressure
- Extreme chemical resistance
- Dry running, durable and maintenance free
- Low pulsation

POSSIBLE AREAS OF USE

- Analysers
- Laboratory
- Cleaning industry
- Printing

Please visit our website
www.knf.com
 to get more information.



PERFORMANCE DATA

Series model	NFB 100 DCB-4*		
Material options	KP	KT	TT
Pump head	PP	PP	PVDF
Diaphragm	PTFE	PTFE	PTFE
Valves	EPDM	FFKM	FFKM
Resonating diaphragm	PTFE		
Flow rate at atm. pressure (l/min)	2 x 1.3		
Suction height (mH ₂ O)	3		
Pressure head (mH ₂ O)	10		
Permissible ambient air (°C)	5 to 40		
Permissible liquid temperature (°C)	5 to 80		
Weight (g)	640		
IP protection factor	30		

ELECTRICAL DATA

Operating voltage (V)	12	24
Power consumption (W)	15	15
I load max. (A)	1.25	0.63

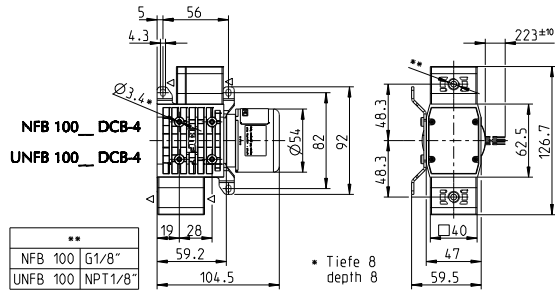
*Stands for brushless DC motor

NFB 100 DCB-4

PERFORMANCE DATA

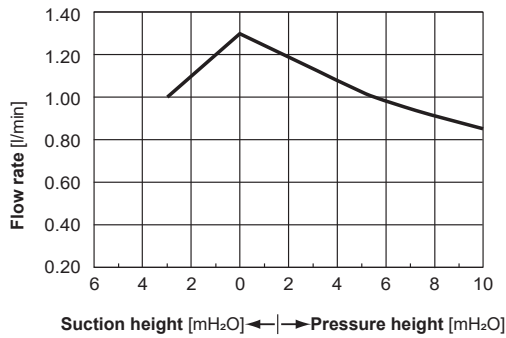
Series model	Flow rate at atm. pressure (l/min)	Max. suction height (mH ₂ O)	Max. pressure head (mH ₂ O)
NFB 100 DCB-4	2 x 1.3	3	10

NFB 100 DCB-4

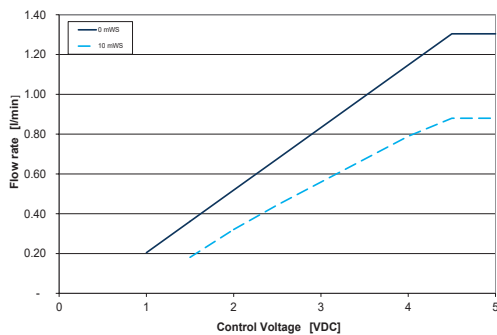




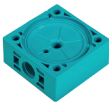
Dimensions in mm

NFB 100 DCB-4 FLOW CURVE (PER HEAD)



NFB 100 DCB-4 CONTROL CURVE (PER HEAD)






OPTIONS		
Description	Illustration	Details
Motors		Various voltage options, higher and lower service life
Electrical connections		Molex, AMP etc.
Hydraulic connections		G / NPT internal thread.



NSF National Sanitary Foundation

This certification will confirm that all of the pumps with the code .51 are certified for the use with foods/consumables.

ACCESSORIES		
Description	Illustration	Details
Diaphragm pressure control valve		The pressure control valve can be used for a more accurate control of flow against a fluctuating back pressure, metering into a vacuum and from a pressurised system.
Pulsation damper		This very versatile pulsation damper reduces the vibration in hoses and pipes and it helps to remove pulsation which is preventing the system from functioning correctly.
Tubing		E.g. parallel connection of heads for low pulsation.

The performance values for the series models shown on this data sheet were determined under test conditions. The actual performance values may differ and depend in particular on the usage conditions and therefore on the specific application, on the parameters of the components involved in the user's system and on any technical modifications carried out which deviate from the standard configuration or the as delivered condition.

If individual designs have been created for specific customers on the basis of series models, other technical performance data may apply. Before operation begins, the relevant operating instructions and/or assembly or installation instructions should be read and the safety information contained in these instructions should be noted. KNF reserves the right to make changes to the product and the associated documentation without prior notice to the customer.



www.knf.com