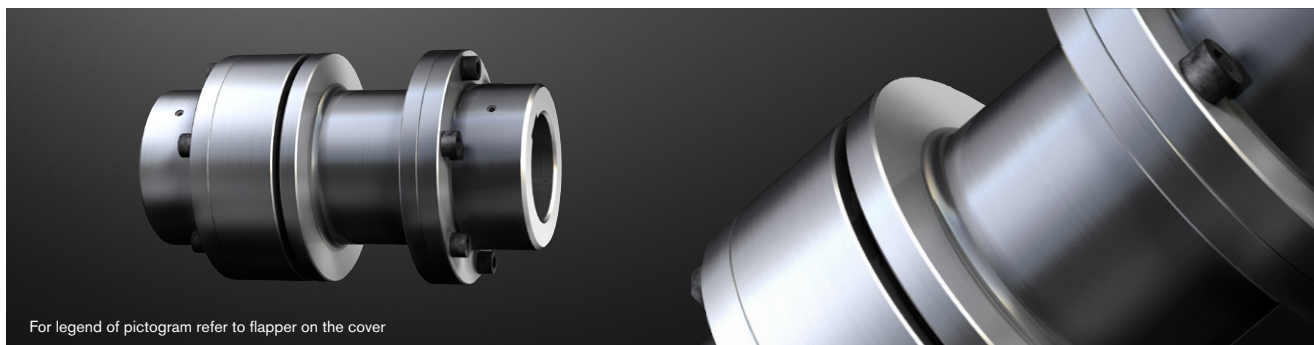


# POLY PKA

## Flexible couplings

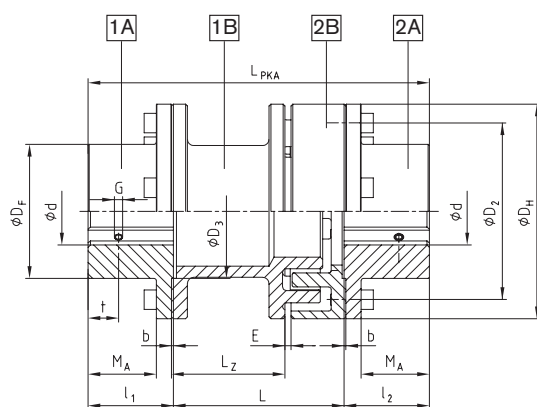
### Drop-out center design coupling



For legend of pictogram refer to flapper on the cover



#### Components



Components of type PKA:  
 1A/2A = Coupling flange (steel)  
 1B = Spacer (GJL)  
 2B = Driving flange (GJL)  
 1A and 1B to be preferably used on driving side

POLY Type PKA																		
Size	Rated torque $T_{KN}$ [Nm]	Max. speed $n$ [rpm]	Max. finish bore d component 1A/2A	Dimensions [mm]											Setscrew			Weight [kg]
				$D_H$	$D_F$	$D_2$	$D_3$	$l_1, l_2$	$b$	$M_A$	$E$	$L$	$LPKA$	$L_Z$	$G$	$t$	$T_A$ [Nm]	
8	42	5000	40	86	55	70	60	35	1.5	25.5	3	100	170	66	M5	15	2	3.04
9	72	5000	50	97	70	85	70	41	1.5	30.5	3	100	182	63	M8	15	10	4.26
												140	222	103				4.66
10	100	5000	55	107	78	93	80	46	1.5	35.5	4	100	192	61	M8	20	10	5.42
												140	232	101				5.88
12	170	5000	70	131	95	113	90	55	1.5	43.0	4	100	210	55	M8	20	10	9.49
												140	250	95				10.15
14	210	4800	75	142	105	125	100	60	1.5	48.0	4	100	220	54	M8	25	10	11.46
												140	260	94				12.23
15	320	4300	80	157	110	135	110	65	1.5	49.5	4	140	270	93	M8	25	10	15.63
												180	310	133				16.50
20	820	3300	110	205	150	175	130	80	2.0	61.0	4	140	300	81	M8	30	10	30.96
												180	340	121				32.18

Ordering example:	POLY	PKA	15	140	Ø38	Ø40
	Coupling type	Type	Size	Drop-out center design length	Finish bore component 1A	Finish bore component 2A