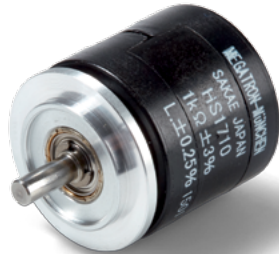


# Data Sheet for Precision Potentiometer

Multiturn Wirewound Potentiometer

Series HS17



The HS17 potentiometers in 22 mm housing are suitable for applications where a precise and economical multiturn potentiometer with servo flange is important.

- Optional version HS17xxR with integrated slipping clutch
- With many options

Electrical Data	3-turn	5-turn	10-turn
Effective electrical angle of rotation 1.)	1080° ±5°	1800° ±5°	3600° ±5°
Total resistance 1.)	100 Ohm..10 kOhm	100 Ohm..50 kOhm	100 Ohm..100 kOhm
Resistance tolerance	±3% (±1%)		
Independent linearity (best straight line) 1.)	±0.25%		±0.25% (±0.1%)
Theoretical resolution 1.)	Depends on resistance value (see table below)		
Backlash (Hysteresis) 1.)	≤ 2°		
Rotational noise (ENR) 1.) (Method C)	100 Ohm		
Max. / recommended wiper current 1.)	35 mA / 2 µA		
Power rating @ 70°C (0W @ 105°C)	0.5 W	1 W	2 W
Insulation Voltage 1.)	1000 VAC, 1min		
Insulation Resistance 1.)	1000 MOhm @ 500 VDC		

Mechanical Data, Environmental Conditions, Miscellaneous	3-turn	5-turn	10-turn
Mechanical angle of rotation 1.)	1080° +10°	1800° +10°	3600° +10°
Lifetime (90% el. eff. angle half sine) 2.)	300.000 rotations	500.000 rotations	1 Mio. rotations
Max. operational speed	40 rev. / min.		
Bearing	Ball bearing front, sintered bearing rear side		
Operational torque @ ambient temperature 1.) 2.)	5 Nmm		
End stop torque 1.) 2.)	35 Ncm		
Operating temperature range	-20 °C up to +105 °C		
Storage temperature range	-55 °C up to +105 °C		
Protection grade (IEC 60529)	IP40		
Vibration (IEC 68-2-6, Test Fc)	15g 10Hz up to 2000Hz x 12h		
Shock (IEC 68-2-27, Test Ea)	49g bei 11 ms x 18		
Housing diameter	22 mm		
Housing depth	22 mm		
Shaft diameter	3.175 mm		
Shaft type	Solid shaft		

# Data Sheet for Precision Potentiometer

Multiturn Wirewound Potentiometer

Series HS17

Mechanical Data, Environmental Conditions, Miscellaneous	3-turn	5-turn	10-turn
Max. radial load	≤1 N		
Max. axial load	≤1 N		
Connection type	Gold plated soldering lugs		
Connection position	Radial		
Sensor mounting	Servo flange		
Mass	30 g		
Fastening parts included in delivery	3 x servo clamps SFN2 with screw M3 x 7.5		
Material shaft	Stainless steel		
Material housing	Plastic		

1.) According IEC 60393

2.) Determined by climatic conditions according to IEC 68-1, para. 5.3.1 without load collectives

Please note: Max. permissible supply voltage <75 VDC respectively <50 VAC in addition the max. power rating must be observed

Number of wire turns / resolution										
Resistance value Ohm	100	200	500	1k	2k	5k	10k	20k	50k	100k
Number of wire turns (HS1703)	820	920	1270	1350	1270	1990	2570	-	-	-
Number of wire turns (HS1705)	1240	1560	2000	2510	2400	3200	3900	4800	5500	-
Number of wire turns (HS1710)	2100	2480	3300	4000	5020	5000	6400	7800	10100	11000

Resolution in degree E.g. R5k 5-turn =  $1800^\circ / 3200 = 0,563^\circ$  per winding resistive wire

# Data Sheet for Precision Potentiometer

Multiturn Wirewound Potentiometer

Series HS17

Order code									
Description	Selection: <b>standard=black/bold</b> , possible <i>options=grey/italic</i>								
<b>Series</b>	<b>HS17</b>								
<b>Revolutions with stop:</b>									
<i>Option 3-turn</i>									
<i>Option 5-turn</i>									
<b>10-turn</b>									
<b>Slipping clutch:</b>									
<b>Without additional mechanics</b>									
<i>Option with integrated slipping clutch</i>									
<b>Resistance value / Option tandem:</b>									
<i>Option 100 Ohm</i>									
<i>Option 200 Ohm</i>									
<i>Option 500 Ohm</i>									
<b>1 kOhm</b>									
<i>Option 2 kOhm</i>									
<b>5 kOhm</b>									
<b>10 kOhm</b>									
<i>Option 20 kOhm (only 5 + 10 Turn)</i>									
<i>Option 50 kOhm (only 5 + 10 Turn)</i>									
<i>Option 100 kOhm (only 10 Turn)</i>									
<b>Resistance tolerance:</b>									
<b>±3%</b>									
<i>Option ±1%</i>									
<b>Independent linearity:</b>									
<b>±0,25% (3 to 10-turn)</b>									
<i>Option ±0,10% (10-turn) R ≥ 5kOhm</i>									
<i>Option center tap only 10 turn:</i>									
<b>Front shaft:</b>									
<b>Standard Ø3,175 x 9,6 mm</b>									
<i>Option shaft length in mm</i>									
<i>Option shaft diameter in mm (≤6,35 mm)</i>									

**For higher quantities or on-going demand, additional options are available as described below on request**

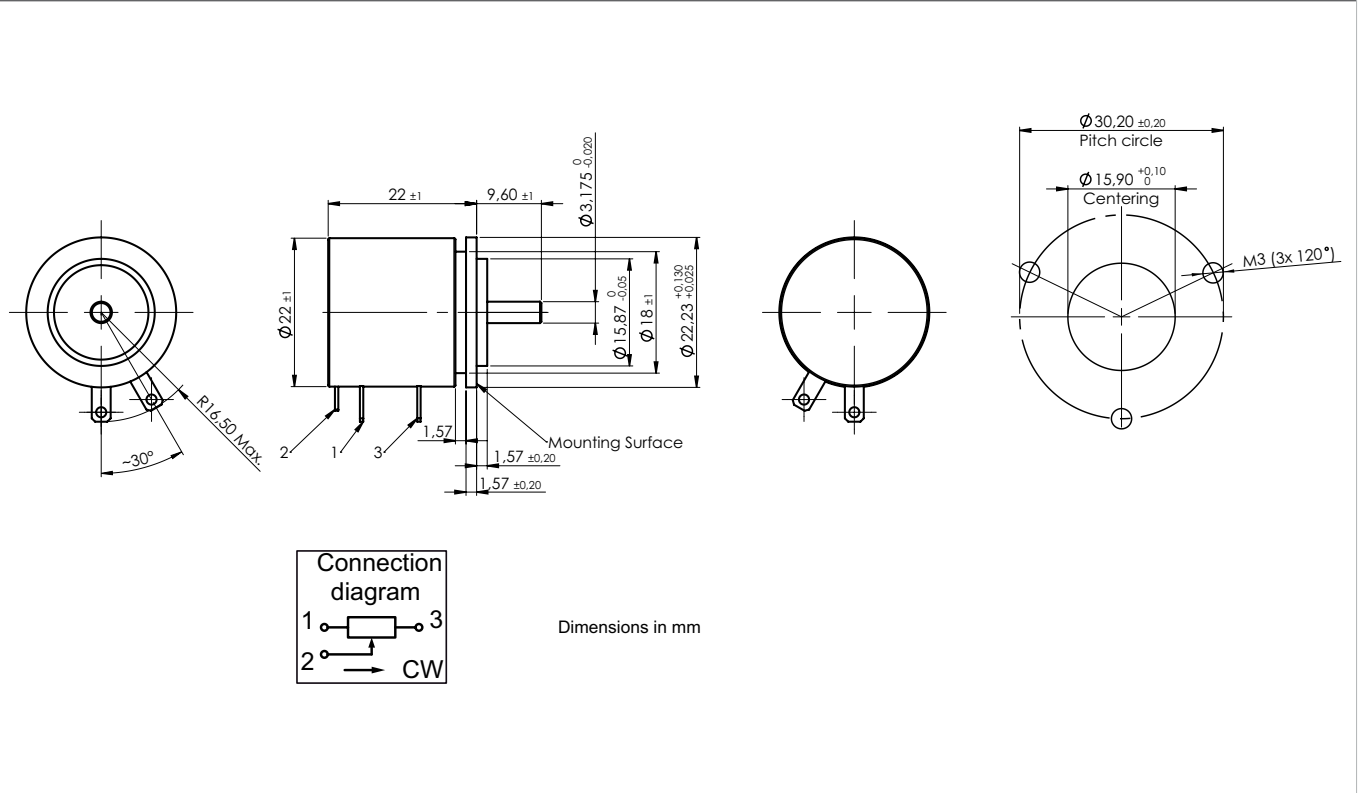
For Example: Special electrical and mechanical angles of rotation, and special resistance and linearity tolerances. Furthermore we can mount gear wheels or attach cable assemblies with or without connectors and much more.

# Data Sheet for Precision Potentiometer

Multiturn Wirewound Potentiometer

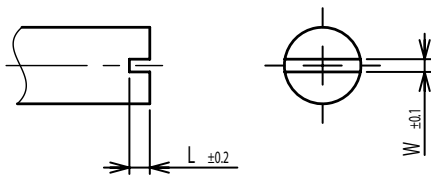
Series HS17

## Drawing

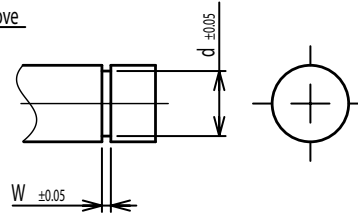


### On Request: Special machining on shaft

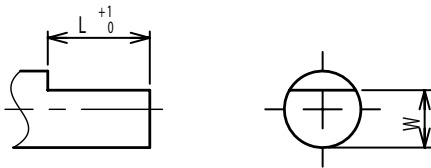
Slot



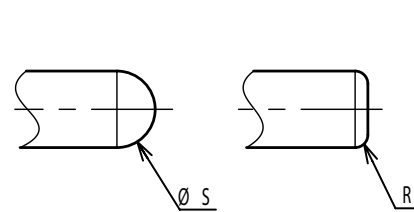
Groove



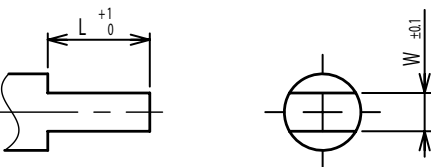
Flat



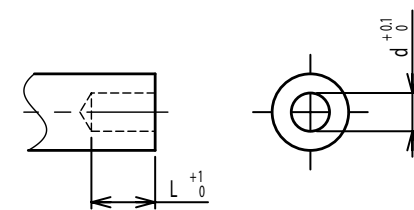
Round top



Double side flat



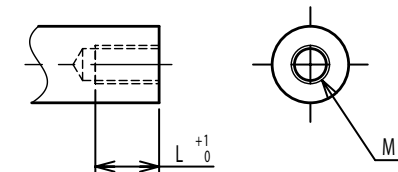
Counterbore hole



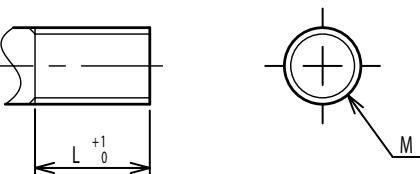
Step



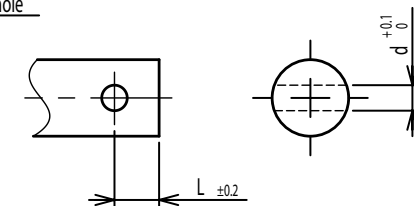
Counterbore screw hole



Screw Thread



Pin hole



Knurled(Parallel)



Screw thread inside hole

